



# ABELO



## BEEKEEPING EQUIPMENT

Catalogue 2016

We are the sole UK  
distributor for Lyson products

**LYSON**   
**POLAND**





■ Polystyrene Hives.....	4	■ Queen Rearing.....	15
■ Polystyrene Nuc Boxes.....	9	■ Pollen.....	19
■ Frames & Foundation.....	10	■ Swarms, Skeps.....	21
■ Hive Tools, Smokers.....	11	■ Feeders.....	22
■ Protective Clothing.....	13		



■ Extractors.....	24
-------------------	----



■ Uncapping Machines.....	34	■ Capping Screw.....	50
■ Uncapping Tables &Trays.....	37	■ Honey Warming.....	53
■ Honey Processing.....	38	■ Bottling Machines.....	56
■ Strainers.....	41	■ Wax Melting.....	60
■ Honey Tanks, Buckets, Valves.....	42	■ Labels.....	62
■ Creaming Machines.....	46	■ Candle Moulds.....	64
■ Pumps.....	48		

**ABELO** was established in 2011 with the aim of supplying top quality beekeeping products across the UK. We offer a wide range of affordable products suitable for the hobbyist or commercial beekeeper. We will not be beaten on price!

Many of our products are made by Lyson for whom we are the sole UK distributor. If you have any questions or queries or would like more information about any of our beekeeping equipment, please feel free to contact us at:  
Email: [sales@abelo.co.uk](mailto:sales@abelo.co.uk)  
Telephone: 01759 373801





# Polystyrene Hives

All our poly hives are high density 160 kg/1m3. This extra density can only be achieved by steam moulding, not injection. It adds extra strength and durability to our poly hives. This process was first used about 30 years ago and testimony to it's strength many of those first hives are still in use today.

## National Polystyrene Hive

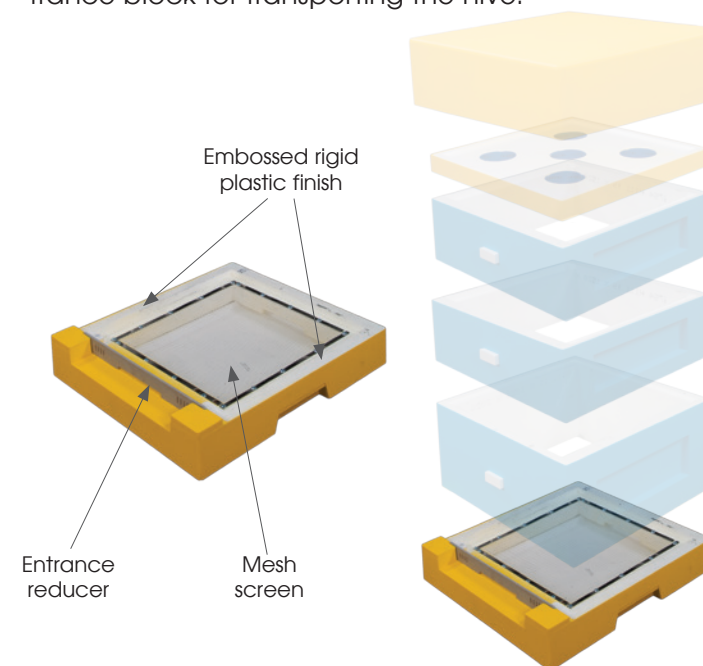
Abelo are proud to introduce their newly designed poly National hive. These are single moulded high density polystyrene hives (160g/litre) providing enhanced insulation properties and strength. They come ready painted to use straight from the box. The paint is unique and has been specifically developed for us, giving a highly durable waterproof finish. We have also embossed the top and bottom of both the brood boxes and supers with rigid plastic.



### FLOOR

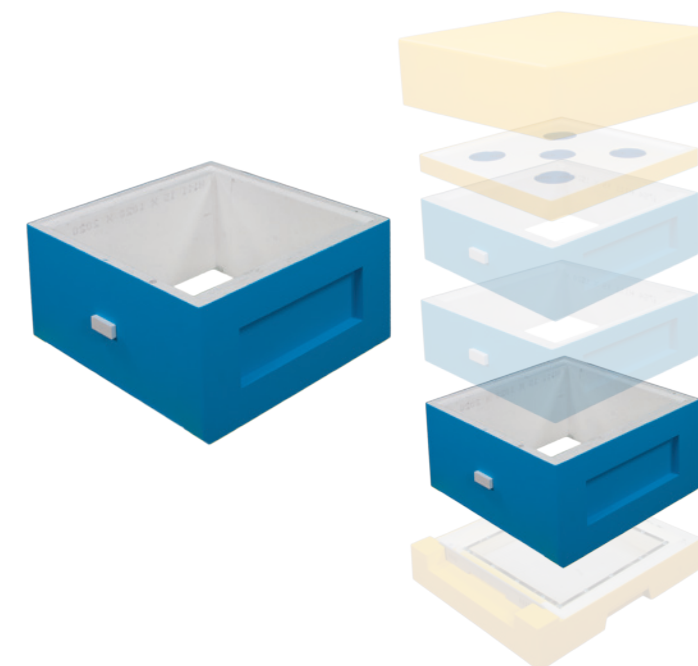
Our poly floors come with an open mesh screen with a tray insert and includes a landing board. A clever additional extra is a pollen trap which simply fits over the floor, allowing pollen to be collected in the tray underneath.

The entrance reducer is multifunctional and can be positioned as a mouse guard or a ventilated entrance block for transporting the hive.



### BROOD BOX

The standard brood box comes with two side entrances which can be open or closed with polystyrene entrance blocks or plastic ventilation blocks, allowing multiple entry and exit points for the bees; reducing congestion during busy periods. They can also be used with the mesh inserts to provide ventilation in hot summers or for transportation.



### SUPER

The super is the same construction as the brood box but also has a ventilation entrance for the bees.



### ROOF

The roof is a one piece 6" deep, compatible with all National hives. There is sufficient space under the roof for fondant.

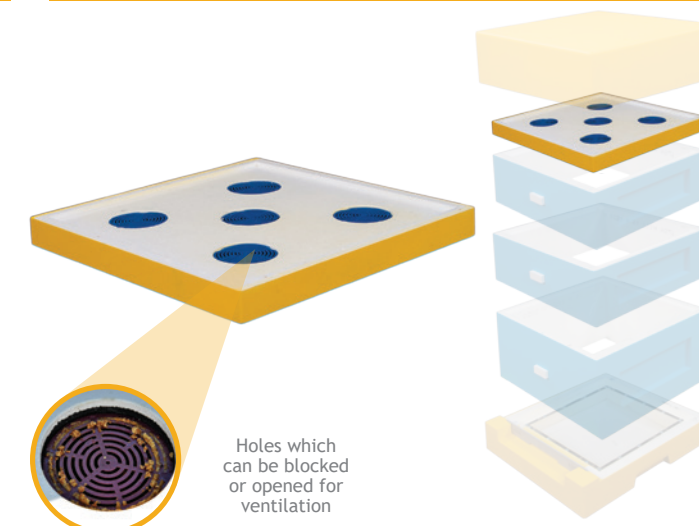


### CROWN BOARD

The crown board is unique. It is highly insulated and equipped with five holes which can be blocked or opened for ventilation depending on the choice of block. Solid or ventilated blocks are included.

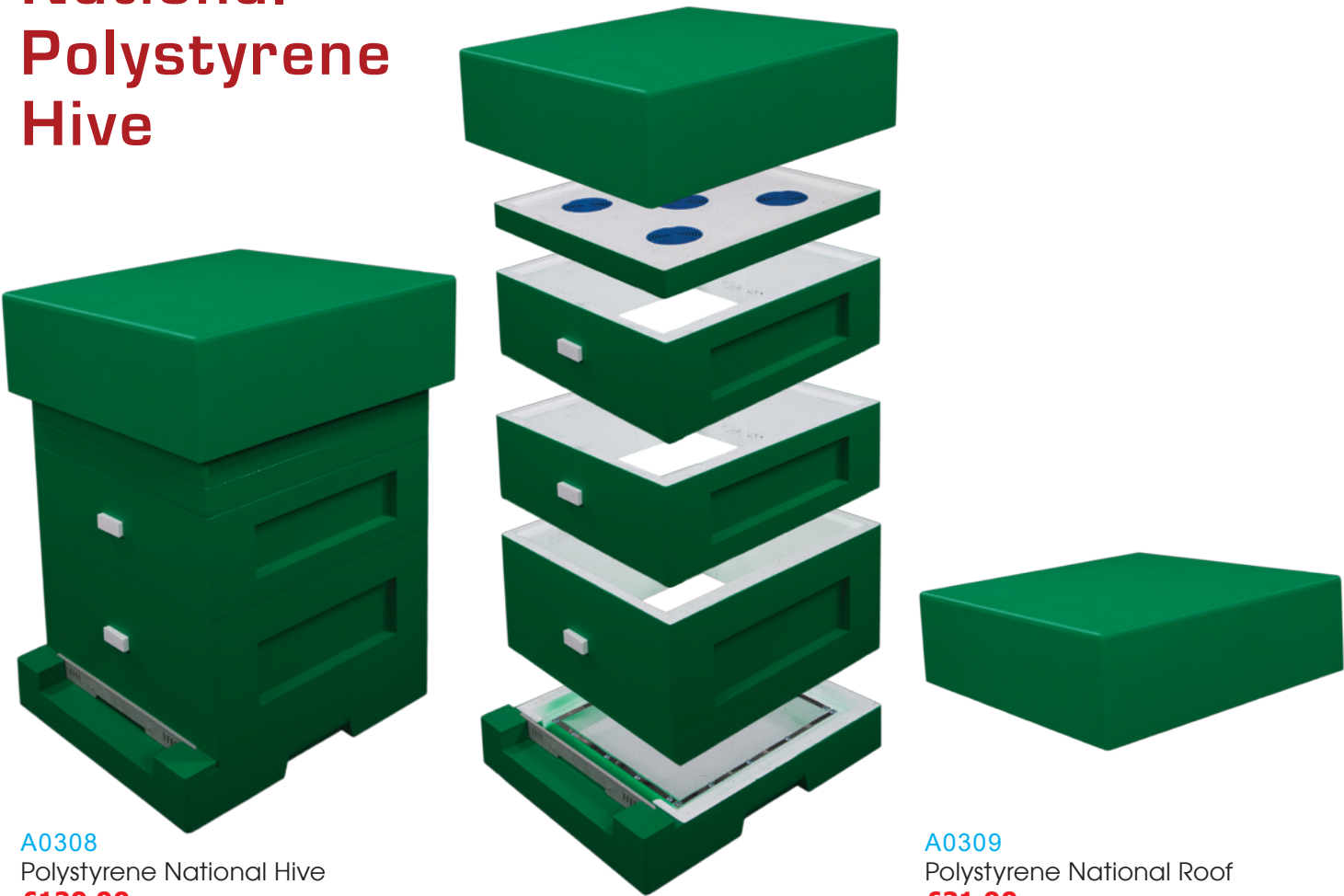
The centre hole can be removed and a feeder placed over it. Alternatively, an eight way or rhombus style bee escape can be placed under the hole and used to clear supers.

Heat from the hive will rise through the crown board vents, if opened. This can be used to heat a split brood box with 2 small nucleus colonies over the winter.



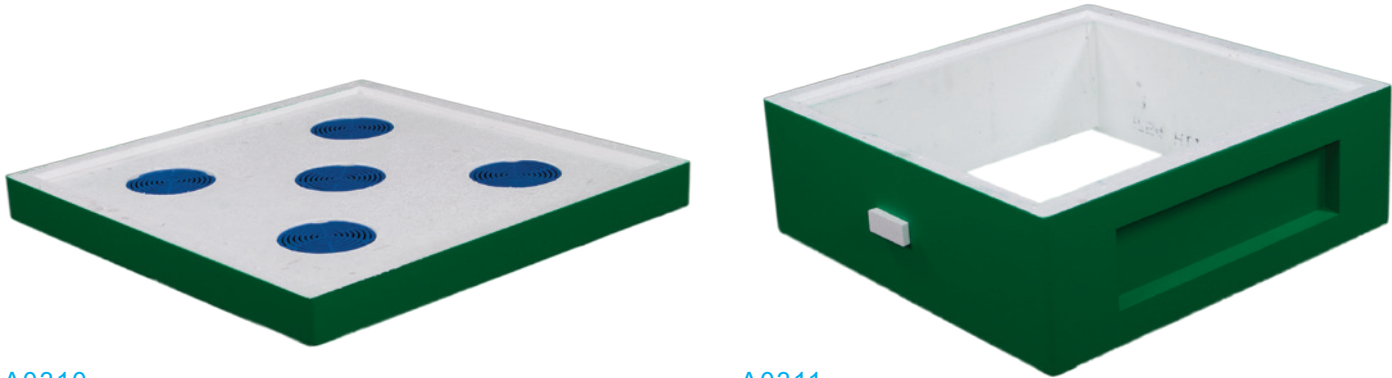


# National Polystyrene Hive



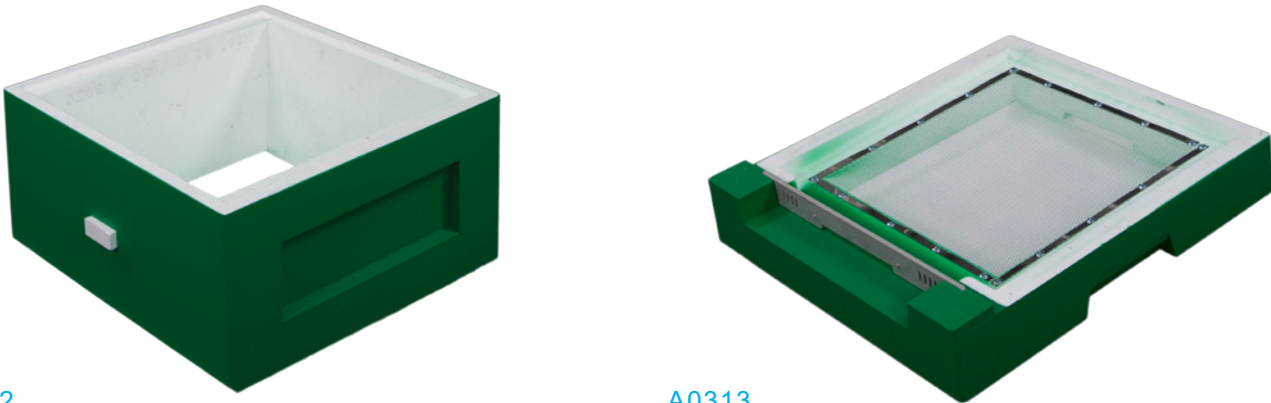
A0308  
Polystyrene National Hive  
£120.00

A0309  
Polystyrene National Roof  
£21.00



A0310  
Polystyrene National Crown Board  
£21.00

A0311  
Polystyrene National Super  
£19.00



A0312  
Polystyrene National Brood Box  
£24.00

A0313  
Polystyrene National Mesh Floor  
£24.00

# Polystyrene Langstroth Hive

Consists of: roof, 2x brood box, queen excluder, varroa floor, polystyrene entrance blocks and plastic ventilation blocks.

Frame size: standard Langstroth 17 5/8"×9 1/8".  
(Top Bar 19 inches, Side Bar 9 1/8 inches, Bottom Bar 17 9/16 inches).



A0138  
Langstroth Polystyrene - Standard (2 x brood box)  
£85.00





# Polystyrene Langstroth Hive with Supers

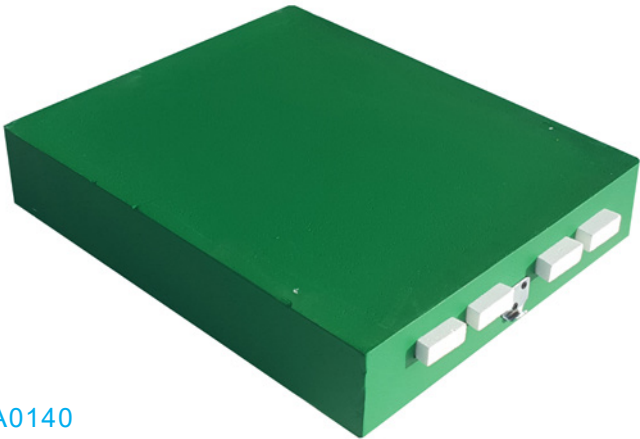


A0137  
Langstroth Polystyrene Bee Hive  
£95.00

Consists of: roof, shallow supers x2, brood box, varroa floor, polystyrene entrance blocks, plastic ventilation blocks, queen excluder, entrance reducer.

Frame size:  
Brood box, Standard Langstroth: 17 5/8"x9 1/8". (Top Bar 19 inches, Side Bar 9 1/8 inches, Bottom Bar 17 9/16 inches).

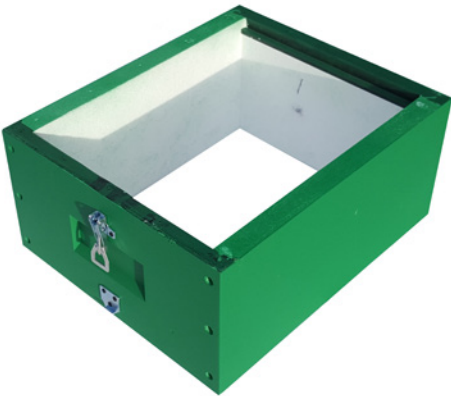
Supers: Langstroth medium, Modified Dadant shallow frames: Top Bars 19", Side Bars 6 1/4", Bottom Bar 17 9/16". Standard shallow Langstroth frame will not be deep enough (about 20mm)



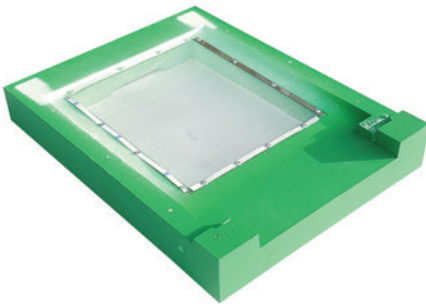
A0140  
Langstroth Bee Hive Roof  
£22.00



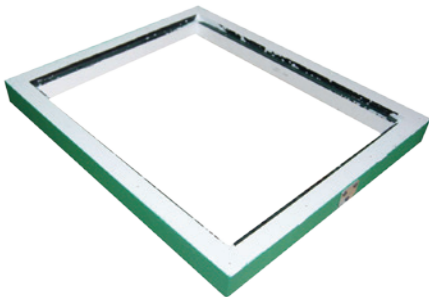
A0141  
Polystyrene Langstroth Medium  
£18.50



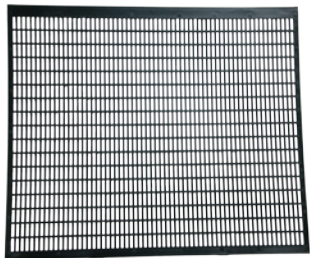
A0142  
Polystyrene Langstroth Brood Box  
£24.00



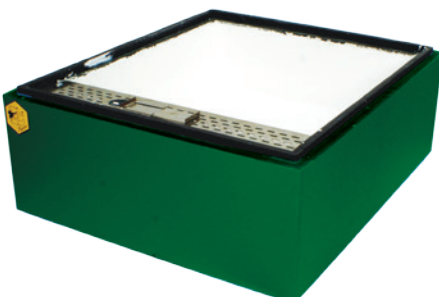
A0139  
Polystyrene Langstroth Mesh Floor  
£24.00



A0144  
Polystyrene Langstroth Eke  
£6.50



A0145  
Plastic Queen Excluder - Langstroth  
£3.99

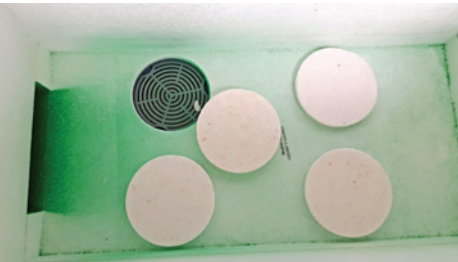


A0143  
Polystyrene Langstroth Feeder  
£23.00

# 6 Frame Commercial Polystyrene Nucleus Hive — Painted

Dimensions: 580mm long, 280mm wide, 400mm high.

A0147  
6 frame Commercial Polystyrene Nucleus Hive - Painted  
£35.00



- Components:**
- » Floor
  - » Body
  - » Roof
  - » Various vents
  - » Entrance Reducer



# 6 Frame Langstroth Polystyrene Nucleus Hive — Painted

Holds six Langstroth frames

- Dimensions:**
- » 580mm long,
  - » 280mm wide,
  - » 400mm high.

A0148  
6 Frame Langstroth Polystyrene Nucleus Hive - Painted  
£35.00



# 3 Frame Langstroth Polystyrene Nucleus Hive

Holds three Langstroth frames.

- Dimensions:**
- » 570mm long,
  - » 190mm wide,
  - » 330mm high.



A0149  
3 Frame Langstroth Polystyrene Nucleus Hive - Painted  
£29.99





British Standard National Frames

Frames are 1<sup>st</sup> quality and are flat packed ready for assembly (10 frames/pack).

A0109	National SN4	£9.35
A0110	National DN4	£9.35
A0108	National DN1	£8.25
A0107	National SN1	£8.25
A0112	National Manley	£10.45
A0111	National 14" x 12"	£12.19
A0113	National DN5	£10.45
A0114	National SN5	£10.45

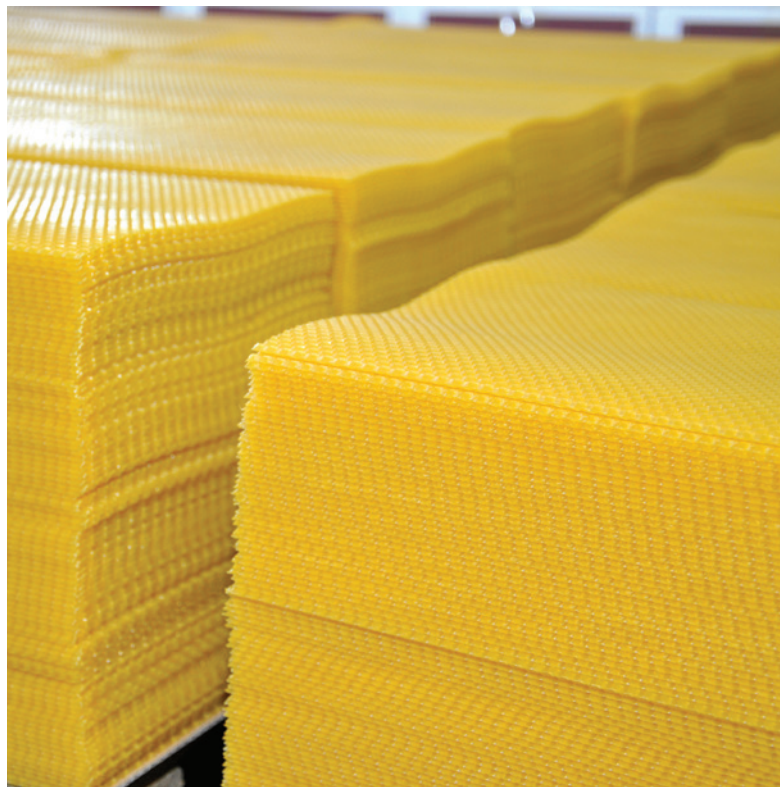


A0314	DN4 National Frames x50	£45.10
A0315	SN4 National Frames x50	£45.10

Fundation  
10 sheets/pack



A0103	British Standard Deep Wired	£9.80
A0104	British Standard Shallow Wired	£5.99
A0105	British Standard Shallow Unwired	£5.50
A0106	British Standard 14" x 12" Wired	£15.99



Frame wires

Made especially for the bee industry. Non-rusting and great tensile strength.



A0289	Frame Wire 0.4mm 250g Stainless Steel	£7.50
A0290	Frame Wire 0.4mm 500g Stainless Steel	£12.00

12V Wax Embedder Transformer

This 12V transformer is for embedding frame wire into foundation.



A0291	12V Wax Embedder Transformer	£59.00
-------	------------------------------	--------

Hive Tools, Smokers and Other Equipment



A274	Heavy duty hive tool, 20 cm long. Nail-pulling slot and turned down edge for scraping wax or propolis.	£5.20
------	--	-------



A276	The curved blade is for cleaning frames, also features a handy nail & pin removing tool.	£5.59
------	--	-------



A277	Small Hive Tool with wooden handle for better grip. 19cm long.	£7.00
------	--	-------



A275	Stainless Steel Hive Tool – the most popular model, 20 cm long.	£8.50
------	---	-------



A278	Made of high quality stainless steel with wooden handle for better grip. 21cm long.	£9.00
------	---	-------



A279	Hive tool with a J hook end. Made of high quality stainless steel, 20 cm long.	£9.00
------	--	-------



A281	Queen Excluder Cleaning Tool. Strong and well made with stainless steel blade. Overall length 18 cm.	£9.00
------	--	-------



A281	Smoker (small). The main body of the smoker is surrounded by a heat guard for your protection. High: 25 cm.	£15.00
------	---	--------



A282	Smoker (large). The main body of the smoker is surrounded by a heat guard for your protection.	£19.00
------	--	--------



A0128	Smoker fuel APIDOU, lavender 0.3kg.	£0.99
-------	-------------------------------------	-------



A0129	Smoker fuel APIDOU, lavender 10L	£15.00
-------	----------------------------------	--------



A0130	Smoker Fuel APIDOU 40L	£45.00
-------	------------------------	--------



Hive Tools, Smokers and Other Equipment



**A285**  
Hive numbers 3 cm high, made from plastic. Colours may vary.  
**£2.50**



**A286**  
Self Locking Hive Straps 3.5 m. Self locking Strap are a great way to help protect your hive.  
**£3.20**



**A284**  
Bee Brush. Wooden handled with natural soft horse hair. Used to brush bees off frames, roofs etc.  
**£3.00**



**A0247**  
Hornet Trap.  
Just add sugar drink.  
**£3.50**



**A0246**  
Wasp trap.  
Just add sugar drink.  
**£3.50**



**A0316**  
Frame Cleaning Tool.  
For cleaning frame wedges and grooves.  
**£5.50**



**A287**  
Frame Grip. Well made, spring for one hand operation.  
Width 120mm.  
**£7.99**



**A283**  
Smoker Box. Large steel box for carrying smoker & other bee tools.  
**£34.99**



**A288**  
Platform Trolley 300kg.  
For moving boxes, buckets etc.  
**£29.00**

- » Length, overall – 450mm
- » Width, overall – 450mm
- » Tough, sturdy wooden construction
- » 4 swivel castors for easy manoeuvrability
- » Diameter, wheel – 75mm
- » Weight – 6kg
- » Loading capacity – 300kg



Protective Clothing

Reinforced mesh veils giving excellent all round vision. The veil is supported, keeping the mesh (and bees) away from your face. Hoods may be unzipped for throwing back or fully detached for washing. Practical well designed pockets to suit any beekeeping needs. Sleeve cuffs are elasticated to prevent entry of bees. Suits are made from 100% machine washable cotton.

Size Chart

Chest Size	Height (cm)	Chest Size (cm)	Waist size (cm)
S	164	90	78
M	170	96	86
L	176	104	94
XL	182	112	102
XXL	188	120	110
XXXL	196	128	118

Beekeeping Suit (Hat)



Detachable hood. Airy, reinforced mesh with good visibility. Double supporting rings keep the mesh away from your face.



Zip around the hat. Heavy duty zip lock. Velcro seal flap.



Practical pockets adapted to the beekeepers' needs.



Strong elasticated sleeve cuffs preventing the entry of bees under clothing.

<b>A0173</b>	Small	<b>£49.99</b>
<b>A0174</b>	Medium	<b>£49.99</b>
<b>A0175</b>	Large	<b>£49.99</b>
<b>A0176</b>	Extra Large	<b>£49.99</b>
<b>A0177</b>	XXLarge	<b>£49.99</b>
<b>A0178</b>	XXXLarge	<b>£49.99</b>
<b>A0179</b>	XXXXLarge	<b>£49.99</b>



Beekeeping Suit (Mask)



A0180	Small	£49.99
A0181	Medium	£49.99
A0182	Large	£49.99
A0183	Extra Large	£49.99
A0184	XXLarge	£49.99
A0185	XXXLarge	£49.99
A0186	XXXXLarge	£49.99

Jacket With Hat

Very clear vision. Three pockets. 100% cotton. Great for those quick visits to the hives. Pictures are for illustration purposes only and colours may vary.



A0169	Small	£35.00
A0170	Medium	£35.00
A0171	Large	£35.00
A0172	Extra Large	£35.00

Gloves



A0165	Small	£14.99
A0166	Medium	£14.99
A0167	Large	£14.99
A0168	Extra Large	£14.99

Gaiters & Gauntlets



A0189	Gaiters	£4.50
A0190	Gauntlets	£4.20

Hat Veil



A0164  
Hat Veil  
£9.50

Made from top quality material. The veil is supported with rubberized bars to keep it away from your face. Pictures are for illustration purposes

Children's Beekeeping Suit



A0187	116 cm	£39.99
A0188	128 cm	£39.99
A0294	152 cm	£39.99

Queen Rearing



Mini Bee Hive — Mini Plus, Mating Hive



Ready assembled.  
Frame size: 150×200 mm  
Product code A0191

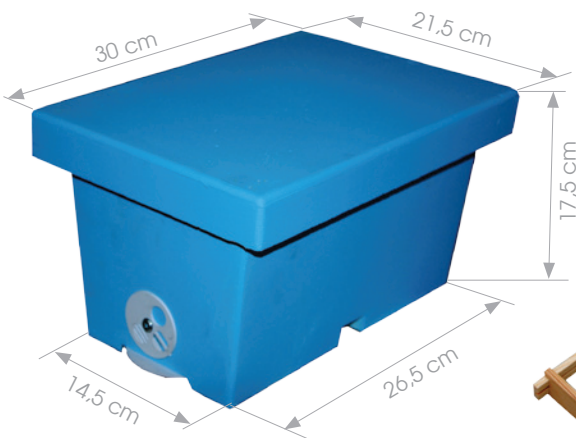
Components:

- » Roof,
- » Feeder,
- » Brood Box,
- » 6 Frames,
- » Floor,
- » Various Entrances,
- » Vents,
- » Dividers.



A0191	Mini Bee Hive - Mini Plus	£35.00
A0192	Mini Bee Hive Frames x6	£6.00

Polystyrene Mating Nuc



Components:

- » 4 Frames,
- » Food chamber,
- » Set of plugs for the flight hole.

Product code A0193



A0193	Polystyrene Mating Nuc	£14.99
-------	------------------------	--------





A0194  
Chinese Grafting Tool.  
£2.50



A0258  
Chinese Grafting Tool –  
Bamboo  
£2.50



A0208  
Disc Entrance 50mm  
Various openings for complete  
control of a nuc entrance.  
£0.99



A0200  
Plastic Queen Cage – Big x1  
wide x 1,5cm depth  
£2.99



A0203  
Plastic Queen Catcher  
£3.00



A0199  
Queen cage x5.  
Dimensions 8cm long x 3,5cm  
wide x 1,5cm depth  
£2.50



A0207  
Disc Entrance 80mm  
Various openings for complete  
control of a nuc entrance.  
£0.99



A0195  
Grafting Tool.  
Professionally designed grafting  
tool with wooden handle grip.  
£5.20



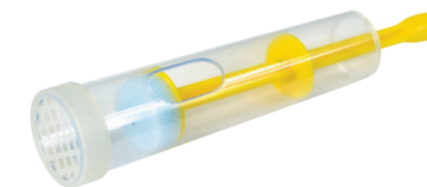
A0197  
JzBz Push In Cell Protector x10  
£3.99



A0257  
Queen Clipping Snips. Far easier  
then trying to use scissors. Super  
sharp and durable.  
£2.99



A0211  
Queen Marking – Glue Only  
£2.40



A0205  
Queen Marking Cage with  
Plunger  
£5.90

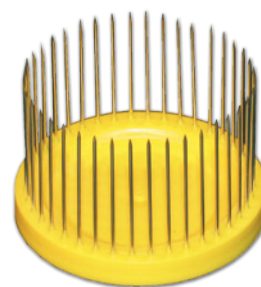


A0206  
Marking Cage  
£1.39

#### Marking Pen



A0319  
White £4.50  
A0320  
Yellow £4.50  
A0321  
Red £4.50  
A0322  
Green £4.50  
A0323  
Blue £4.50



A0204  
Needle Queen Cage  
£3.59



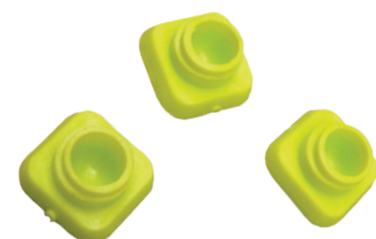
A0202  
Queen Marking Kit 5 Years. Used  
for marking queen bees to deter-  
mine number and age.  
£21.00



A0209  
Queen cage x1  
£0.60



A0210  
Shipping Box for Queen Cage  
£0.80



A0198  
Pack of 24 Cell Cups  
for Plastic Bar  
£3.99



A0324  
Pack of 24 Push In Queen Cell  
Cups. Push them into the cell bar  
and insert bar into the frame.  
£3.99



A0259  
Plastic Cell Bar with Cups  
£4.40



A0317  
Queen Marking Kit 5 Years – New  
Shape  
£21.00



A0318  
Nursery Frame British Standard  
£25.00



National Multi-Mini Nuc

The nuc can be divided into four mating hives, each containing three frames. Each nuc has its own entrance as well as its own space in the crown board for feeding. It can also be divided into two or three larger nuclei.

These half frames slot together to create one frame which fits directly into a national brood box. Meaning queens can be transferred directly from nuc into hive. Alternatively, these frames can be slotted together and the box can be used as a 6 frame nuc.



A0274 National Multi-Mini Nuc £105.00

Mating Hive

Components:

- » 5 Frames;
- » Division Feeder;
- » Vent Hole;
- » Disk Entrance.



A0275 Mating Hive £19.99

Cell Bar Frame and Cups — British Standard

Cell Bar Frame and Cups – British Standard. Cell bars with plastic cell cups (24), used for rearing queens. This method requires grafting.



A0196 National Cell Bar Frame with JZ-BZ Cups £7.99

Nursery Cage x 1

The nursery queen cage is used to hold capped queen cells in the hive. Wooden cell cup on top.



A0256 Nursery Cage £1.50

- Dimensions:
- » 4.5cm long
  - » 2cm wide
  - » 4.5cm high.

Pollen Cleaner



The pollen is sifted through several sizing screens simultaneously the fan blows air through to remove any debris and chaff.

Pollen Cleaner

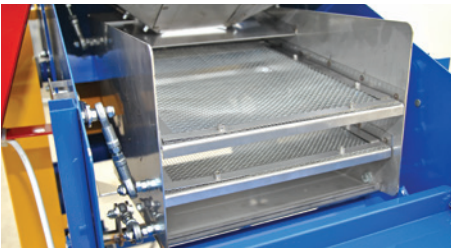
Comprises of a fan and sieves for automatic sorting and cleaning. Ergonomically designed controls allow angles of sieves to be altered and pollen input rate varied.

The pollen is simultaneously sifted through several sizing screens whilst the fan blows a strong current of air through it to remove any small contaminating debris.



A0132 Pollen Cleaner

The pollen dry cleaner has been equipped with 2 motors. One engine is responsible for driving the fan (350W) and the other for proper working of sieves (280W). Such solution optimises the whole process of pollen dry cleaning.



A0131 Pollen Cleaner – Large

The apparatus consists of a centrifugal fan (made of four flat blades 43×15 cm) and a set of two movable sieves (40×32,5 cm). The sieves are reinforced with stainless steel wire mesh: Wire thickness of 0.5mm and eyelet width of 3mm. Pollen intake door dimensions: 45×45 cm. The sieve alignment and angle are adjustable. Built in safety mechanism to prevent any operator injury.

A0132 Pollen Cleaner £1100.00  
A0131 Pollen Cleaner - Large £1999.00



Pollen Drier

- Main features are:
- » Large surface area for efficient drying.
  - » Regulated thermostat (29-63°C) to control drying rate.
  - » Perforated plastic trays, allowing good through ventilation and speeding pollen drying.T
  - » Efficient ventilator located at the back of the device
  - » 0,5 kg – 1 kg of pollen per tray, depending on original pollen humidity.

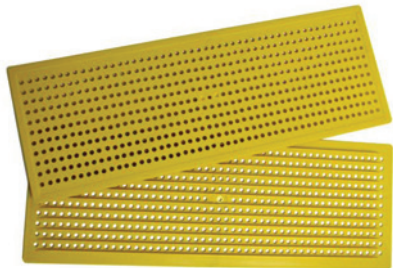
Device is easy to clean.

- Devices specification:
- » Tray's height 3 cm
  - » 240/110V; 60/50 Hz; 600W



A0135	Pollen Dryer 6 Trays	£158.25
A0134	Pollen Dryer 8 Trays	£175.00
A0133	Pollen Dryer 10 Trays	£199.00

- » Length: 408mm
- » Width: 148mm



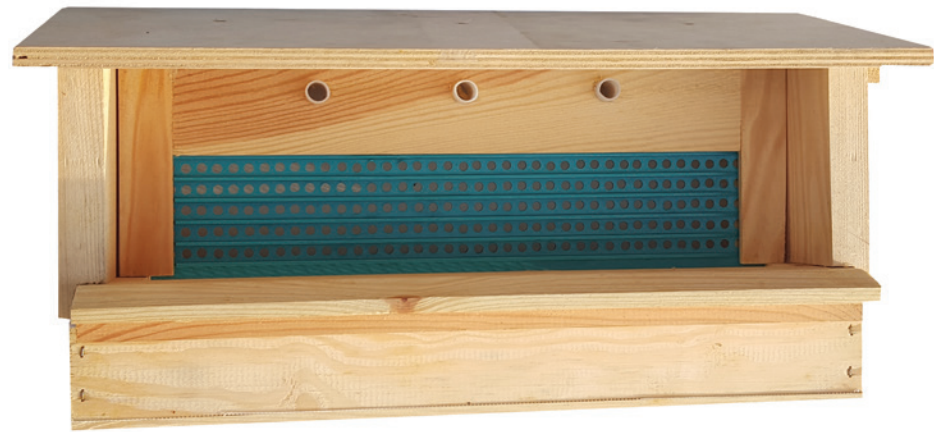
A0136  
Pollen Collecting Grille - Wide  
£1.99



A0338  
Pollen Collection Tool  
£10.00

Collect your own pollen! Pollen Trap hangs in the entrance of a hive, supported by two L hooks. The specially designed collecting screen can be raised or lowered to collect pollen. The collection drawer comes out from the side. Three drone escapes allow easy exit. Easy installation.

- Dimensions:
- » 400mm long
  - » 180mm wide
  - » 200mm high.



A0339  
Pollen Trap  
£29.00

⚠ Remember: You must collect pollen daily (best time is evening)

Swarms & Skeps



A0257  
National Carry Box  
These are designed to carry spare frames etc. Will take 10 National frames. Strong construction.  
£36.99



A0347  
Nasanov Swarm Attractant.  
Synthetically produced Nasanov pheromone will attract swarms to unoccupied hives or a swarm-catching box.  
£5.99



A0225  
Swarm Catcher Bag.  
Add an extendable pole to suit. Push the open bag up and over the swarm. When the swarm is inside the bag, close the lid by pushing it up onto a branch. Pole not included.  
£39.00

Takes 7 National frames. Strong construction.

- Dimensions:
- » 480mm long
  - » 300mm wide
  - » 300mm high



A0258  
Swarm/Nuc Box - National  
This multi-purpose box can be used for catching swarms or making nucs.  
£36.99



A0213  
Medium Straw Skep  
This traditional straw skep is approximately 24 cm tall and about 24 cm in diameter.  
£16.00



A0212  
Large Straw Skep  
This traditional straw skep is approximately 45 cm high and about 37 cm in diameter.  
£30.00





Feeders



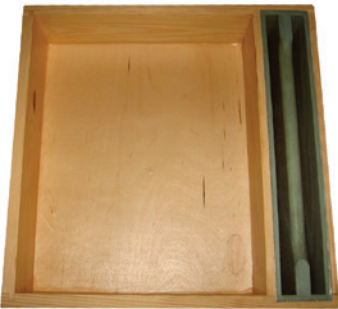
A0254  
British National Crown Board – 3 Holes  
£14.99



A0255  
British National Crown Board – 5 Holes  
£14.99



A0090  
Entrance Feeder 1.5 L  
£4.50



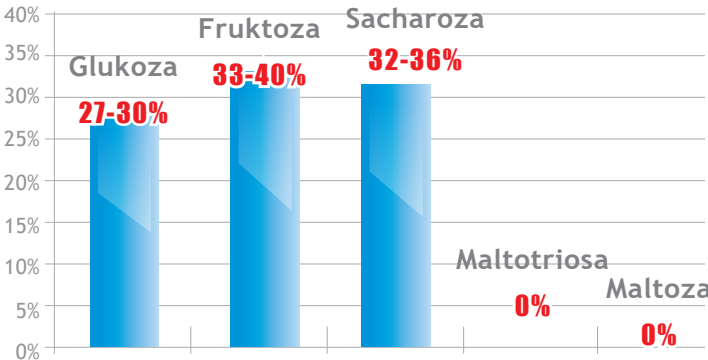
A0101  
National Ashforth Feeder  
£29.99

Feeder for 6 Frame Langstroth polystyrene nucleus hive. It can be used to feed sugar syrup during the active season and for candy by removing the yellow plug from the bottom of the feeder.

A0094  
Feeder for 6 Frame Commercial Polystyrene Nucleus Hive  
£9.99  
A0095  
Feeder for 6 Frame Langstroth Polystyrene Nucleus Hive  
£9.99

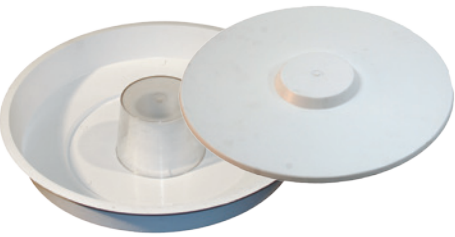


A0350  
Ambrosia Jerry can syrup 12.5 kg  
£24.99



**ambrosia® bee feed syrup** is particularly beneficial in early and late winter feeding:

- » Formula is very close to natural Bee food.
- » Bees accept it immediately.
- » High levels of invert sugars mean less energy expenditure by the bees in converting disaccharides (such as sucrose) into monosaccharides (such as glucose and fructose).
- » Experiments have shown it is 15% more energy efficient than traditional winter feeds.
- » High resistance to microbiological decay gives a longer shelf life
- » Hygienic, time-saving, and practical.



A0099  
Rapid Feeder with Lid  
£6.50



A0100  
National Frame Feeder  
£7.50



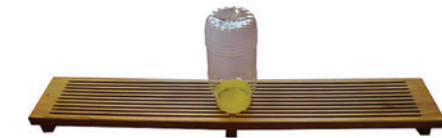
A0096  
Plastic Feeder 2.5L  
£7.50



A0351  
Ambrosia, candy 12.5 kg  
£23.99



A0352  
Ambrosia, candy 2.5 kg  
£4.99



A0102  
Water dispenser  
£29.99



A0292  
Contact Feeder 5 Litre  
£5.20



A0293  
4 Pint Contact Feeder  
£5.20

**ambrosia® bee feed candy** is a fondant-like sugar mixture made from micro-sugar crystals surrounded by a thin film of syrup. This gives a stiff paste with low water content. Bees love it and will often feed on this in preference to any honey stores left in the hive during late winter/early spring. Ambrosia® bee feed dough has a shelf life of 24 months when unopened.





# Manual Tangential Honey Extractors



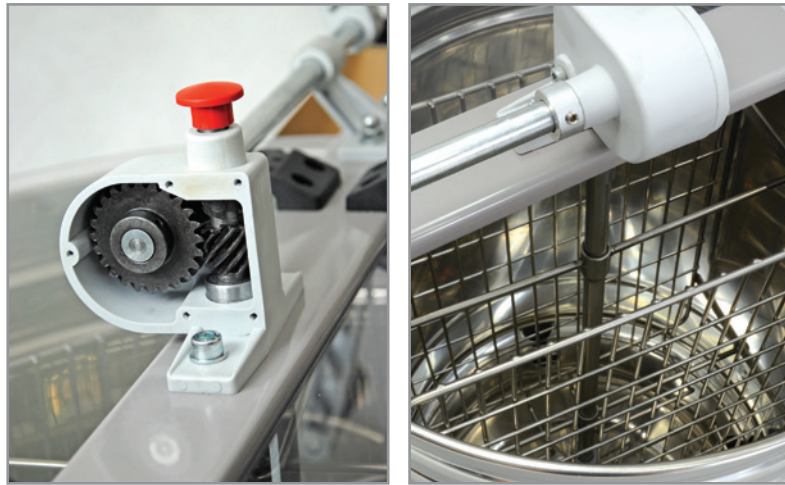
**optima**  
*line*

A0073

Manual 4 Frame Extractor

**£199.00**

- » Holds 4 shallow frames of any size;
- » Acid-proof stainless steel drum, cage and valve;
- » Steel gears;
- » 400mm drum diameter.



A0072

Manual 4 Frame Extractor 3in1

**£325.00**

- » Holds 4 shallow frames of any size;
- » Tangential;
- » Acid-proof stainless steel drum, cage and valve;
- » Steel gears;
- » Strainer and tank detachable to allow for ease of handling;
- » 400mm drum diameter;
- » Tank holds approx. 50 kg of honey.



Comes with an integral strainer and settling tank. There are 4 holes in the bottom of the honey extractor to allow extracted honey to flow through the strainer and into the base tank, which holds approximately 50 kg of honey.

# Electric Tangential Honey Extractors



Our extractors are made from acid-proof stainless steel and fitted with an easy to use 10 speed electric control system. All extractors are fitted with a two part lid system with built in safety mechanism that stops the motor if the lid is opened whilst spinning. There is also an emergency stop button. The base of the honey extractors are cone shaped allowing all of your extracted honey to drain out easily. No more tilting your extractor on its side to get the last drops out.

A0071

Electric 6 Frame Tangential Extractor

**£649.00**

- » Will take 6 shallow or 3 deep frames of any size;
- » Acid-proof stainless steel drum, cage and valve;
- » 500mm drum diameter;
- » 600mm drum height;
- » Two Perspex safety lids;
- » Safety cut-off mechanism;
- » Power supply 240V AC and also on 12V DC;
- » Motor 250W.

A0069

Electric 8 Frame Tangential Extractor

**£690.00**

- » Will take 8 shallow or 4 deep frames of any size;
- » Acid-proof stainless steel, cage and valve;
- » 600mm drum diameter;
- » 600 mm drum height;
- » Two Perspex safety lids;
- » Safety cut-off mechanism;
- » Power supply 240V AC and also on 12V DC;
- » Motor 250W;
- » Rotational speed 480 rpm;
- » Capacity 28 litres.



A2012



A2013



# Electric Radial Honey Extractors

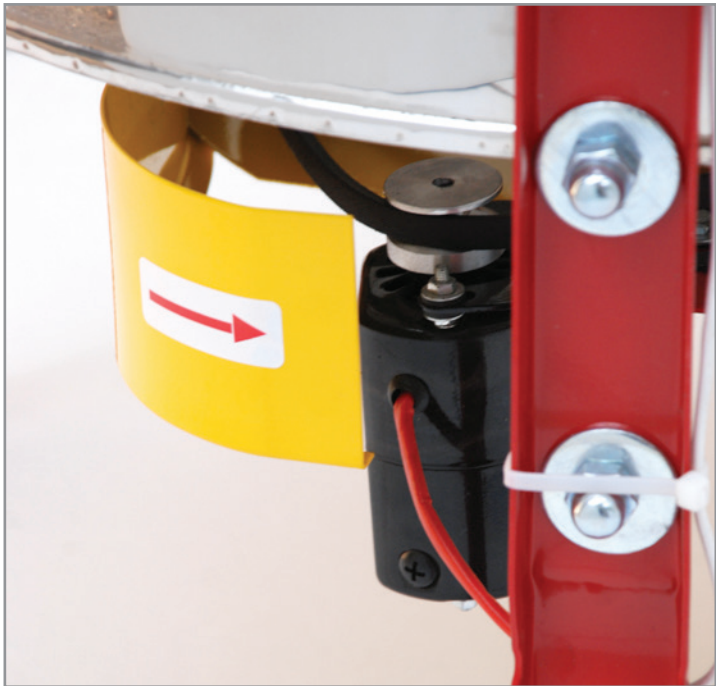
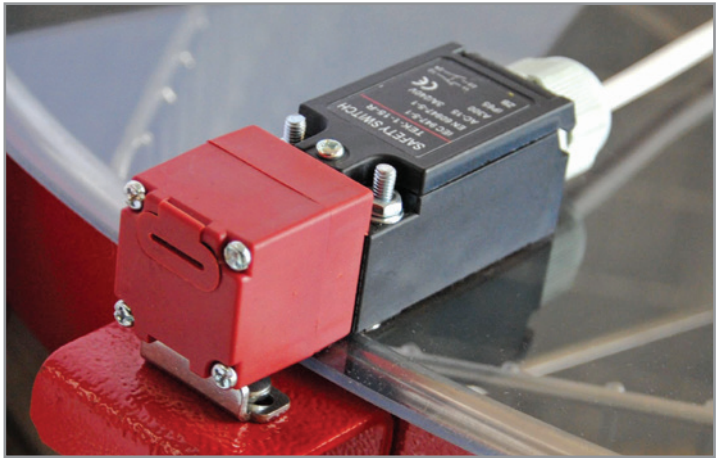


Our extractors are made from acid-proof stainless steel and fitted with an easy to use 10 speed electric control system. All extractors are fitted with a two part lid system with built in safety mechanism that stops the motor if the lid is opened whilst spinning. There is also an emergency stop button.

The base of the honey extractors are cone shaped allowing all of your extracted honey to drain out easily. No more tilting your extractor on its side to get the last drops out.

A0089  
Electric 12 Frame Radial Extractor  
£799.00

- » Will take 12 shallow National frames;
- » Acid-proof stainless steel, cage and valve;
- » 500 mm drum diameter;
- » 600 mm drum height;
- » Two perspex safety lids;
- » Safety cut-off mechanism;
- » Power supply 240V AC and also on 12V DC;
- » Motor 250W.



A0068  
Electric 20 Frame Radial Extractor  
£950.00

- » Will take 20 shallow or 8 deep frames: National, Smith, Langstroth;
- » 600 mm drum diameter;
- » 610 mm drum height;
- » Speed 1-10;
- » Power supply 240V AC and also on 12V DC;
- » Motor 250W.



Made from acid resistant stainless steel and powered by a 240V mains voltage. This extractor uses the SDD-1 system which is an advanced micro-processor to control the speed of the DC motor to save energy and increase efficiency. The controller is equipped with several unique and simple functions - substantially improving the comfort and economics of operating the honey extractor.



# Electric Radial Extractor 3in1

This all-in-one system integrates three separate pieces of equipment into one: a radial honey extractor, un-capping table and strainer. Its compact size makes it ideal for the avid hobbyist when storage space is an issue. The drum and basket are made from acid resistant stainless steel. The stand is made of black steel and coated using electrostatic paint. It is very stable, convenient and is easy to dismantle and clean. The lid is made from perspex and fitted with a safety lock.

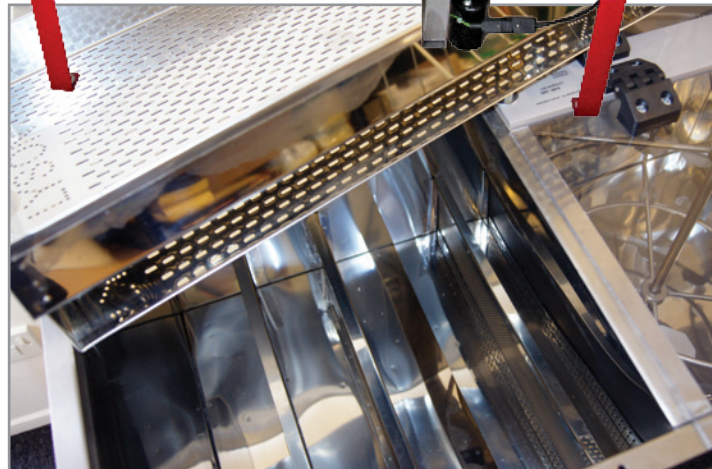
## A0070

Electric 20 Frame Radial Extractor 3in1  
**£1499.00**

- » Will take 20 shallow or 8 deep frames: National, Smith, Langstroth;
- » Stainless steel drum, cage and valve;
- » Two perspex safety lids;
- » Safety cut-off mechanism;
- » Power supply 240V;
- » Motor 280W;
- » Rotational speed 480 rpm.

## Dimensions:

- » Height 1000 mm;
- » Width 650 mm;
- » Length 1150mm.



# Automatic Radial Honey Extractors



Made from acid-proof stainless steel and powered by 240V mains voltage. The programmable motor comes with 8 settings; 1-3 are factory set and 4-8 can be set by the user giving fine control over speed and length of spin. These extractors can also be fitted with the even more advanced HE-03 controller (see page \_\_ for more information). This can be fitted for a small extra charge.

## A0074

Electric 30 Frame Automatic Radial Extractor  
**£1389.00**

- » Will take 30 shallow or deep frames: National, Smith, Langstroth;
- » 800 mm drum diameter;
- » 600 mm drum height;
- » Automatic steering;
- » Power supply 240V;
- » Motor 0.25kW.

## A0075

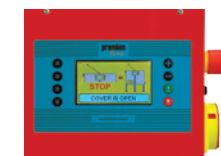
Electric 42 Frame Automatic Radial Extractor  
**£1496.00**

- » Will take 42 shallow or deep; National, Smith, Langstroth;
- » 900 mm drum diameter;
- » 600 mm drum height;
- » Automatic steering;
- » Power supply 240V;
- » Motor 0.37kW.

## A0076

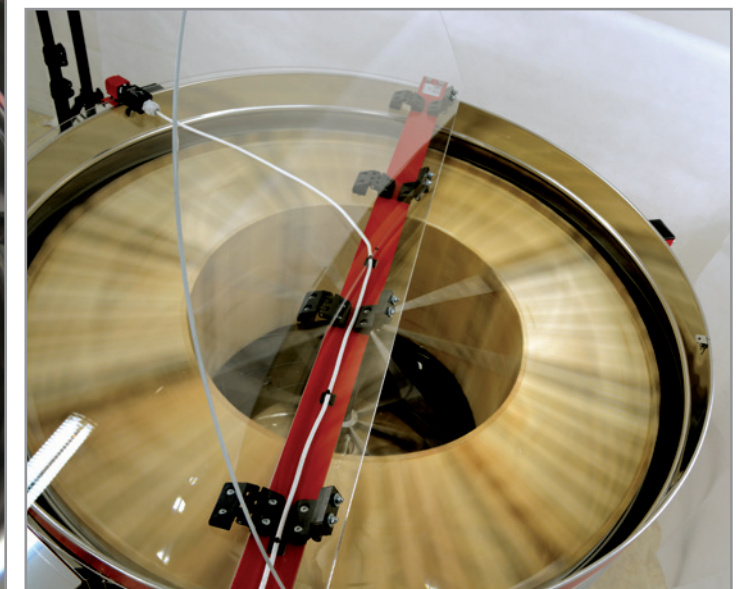
Electric 56 Frame Automatic Radial Extractor  
**£1979.00**

- » Will take 56 frames of any size
- » 1200 mm drum diameter;
- » 600 mm drum height;
- » Automatic steering;
- » Power supply 240V;
- » Motor 0.75kW.



Advanced steering HE-03

Award for innovation in beekeeping, Plevin, 2013.





# Automatic Self-Turning Honey Extractors



Made from acid-proof stainless steel and powered by 240V mains voltage. These extractors hold your honey frames within a cassette and extract them tangentially. They spin in both directions saving you from having to remove and turn the frames over after one side has been extracted.

## A0081

6/12 Frame Self-turning Extractor Ø1000mm  
£1738.00

- » Will take 6 deep or 12 shallow;
- » 1000mm drum diameter;
- » 700mm drum height;
- » Automatic steering;
- » Power supply 240V;
- » Motor 0.37 kW.

## A0082

8/16 Frame Self-turning Extractor Ø1200mm  
£2199.00

- » Will take 8 deep or 16 shallow;
- » 1200mm drum diameter;
- » 750mm drum height;
- » Automatic steering;
- » Power supply 240V;
- » Motor 0.55 kW.



Advanced steering  
HE-03



## A0083

12/24 Frame Self-turning Extractor Ø1200mm  
£2899.00

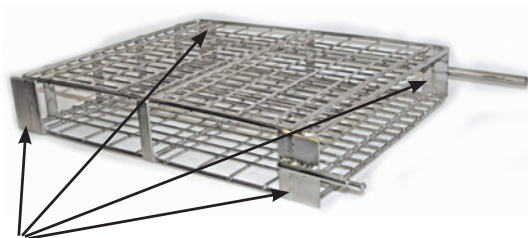
- » Will take 12 deep or 24 shallow;
- » 1200mm drum diameter;
- » 750mm drum height;
- » Automatic steering;
- » Power supply 240V;
- » Motor 0.75 kW.
- » With integral partitions



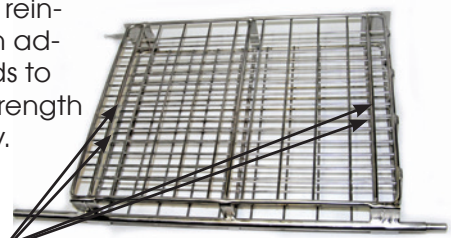
Advanced steering  
HE-03



The corner edges of the cassette are reinforced.



Cassette is reinforced with additional rods to increase strength and rigidity.



# PREMIUM LINE HONEY EXTRACTORS

premium  
line

Premium Line honey extractors are made of the highest quality materials and components ensuring reliability and long life.

All premium line devices come with a 5-year warranty as standard.

## Advance automatic programming

The HE-03 is equipped with the latest electronic processor enabling full control over speed and length of spin. Easy to use and reliable.

## The main features of HE-03 include:

- » 8 fully programmable automatic cycles.
- » Large (4.3") TFT graphic display with energy-saving LED illumination.
- » Graphics Resolution: 480x272 pixels make it easy to read.
- » 8 ergonomically designed settings.
- » Illumination makes it easy to use in all light conditions.
- » Extracting cycle's visual editor with built-in parameters for autocorrecting.
- » 2 independent timers to measure the extractor working time.
- » Advanced diagnostic-controlling functions to constantly monitor the extractor whilst spinning.
- » Calibrated speed control using a Mitsubishi vector inverter.



## The Electromagnetic safety lock

The built-in safety lock (fitted onto the extractor's lid) cuts the power supply off once the cover is open which immediately stops the basket.



## The Transparent lids

are made of meta-plexi, allowing you to safely observe the spinning process.



## The Drum

is made of acid resistant stainless steel, 0.8 mm thick, strengthened and reinforced, with 2 drains 2". The bottom is conical, made of acid resistant stainless steel, 1 mm thick.



## The Gear

fitted with a worm gear. The axis of the honey extractor's basket is directly coupled with the gear.



## The Stand

is made of stainless steel, Stable and easy to dismantle.



## The Drive

the extractor drive consists of a high gear- THF eco-line motor directly coupled to the central shaft of the extractor cage. Using an E1000 series inverter-enables considerable energy savings. Power consumption can be reduced by up to 35% without affecting the performance of the extractor.



# Premium Radial Honey Extractor

premium  
line



A0078

Electric 30 Frame Radial Extractor  
**£2133.00**

- » Will take 30 shallow or deep frames: National, Smith, Langstroth;
- » 800 mm drum diameter;
- » 600 mm drum height;
- » Automatic steering;
- » Power supply 240V;
- » Motor 0.55 kW.

A0080

Electric 56 Frame Radial Extractor  
**£2970.00**

- » Will take 56 frames of any size;
- » 1200 mm drum diameter;
- » 600 mm drum height;
- » Automatic steering;
- » Power supply 240V;
- » Motor 1.5 kW.



A0077

Electric 20 Frame Radial Extractor  
**£1195.00**

- » Will take 20 shallow or 8 deep frames: National, Smith, Langstroth;
- » 600 mm drum diameter;
- » 610 mm drum height;
- » Power supply 240V and 12V;
- » Motor 350W.



Large and clear LCD display with a WiFi plug (optional equipment). Allows to control the device using any portable device such as tablet, phone, computer etc... for data collection.

A0079

Electric 42 Frame Radial Extractor  
**£2352.00**

- » Will take 42 shallow or deep; National, Smith, Langstroth;
- » 900 mm drum diameter;
- » 600 mm drum height;
- » Automatic steering;
- » Power supply 240V;
- » Motor 0.75 kW.



www.abelo.co.uk

# Self-Turning Honey Extractors

premium  
line



A0084

6/12 Frame Self-turning Extractor Ø1000mm  
**£2459.00**

- » Will take 6 deep or 12 shallow;
- » 1000mm drum diameter;
- » 700mm drum height;
- » Automatic steering;
- » Power supply 240V;
- » Motor 0.55 kW.

A0086

12/24 Frame Self-turning Extractor Ø1200mm  
**£3950.00**

- » Will take 12 deep or 24 shallow;
- » 1200mm drum diameter;
- » 750mm drum height;
- » Automatic steering;
- » Power supply 240V;
- » Motor 1.5 kW.
- » With integral partitions.



The cassette basket is made of acid resistant stainless steel rods. Frames are safely secured within the cassette, which are spring loaded. Frames are held securely within the cage whilst spinning and the cassette then returns to its original position afterwards to facilitate easy removal.

A0085

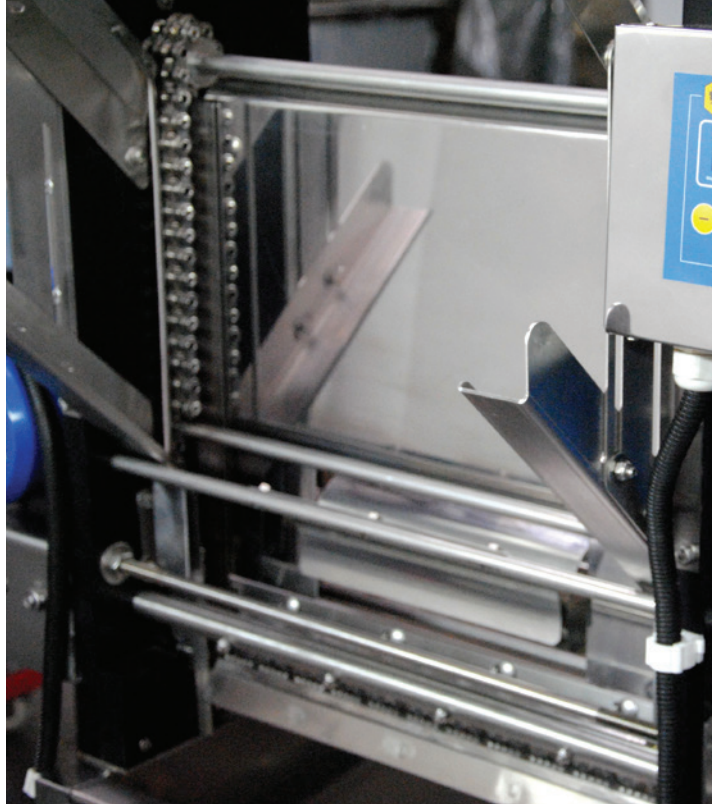
8/16 Frame Self-turning Extractor Ø1200mm  
**£3092.00**

- » Will take 8 deep or 16 shallow;
- » 1200mm drum diameter;
- » 750mm drum height;
- » Automatic steering;
- » Power supply 240V;
- » Motor 1,1 kW.



www.abelo.co.uk





## Uncapping Machines

### Uncapping Machine with Automatic Feeder 230V



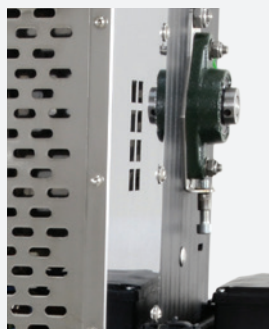
A0235 Uncapping Machine with Automatic Feeder 230V **£2699.00**



A0236 Uncapping Machine with Automatic Feeder 230V - Closed Circuit **£2750.00**

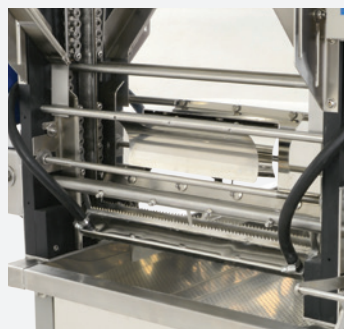
#### Specifications (Closed Circuit):

Blades motor – 0.18 kW;  
Feeding motor – 0.12 kW;  
Motor's rotational speed 9 rpm;  
Power supply 230V  
Heating power circuit 2 kw  
Liquid level indicator  
Warming the blades  
10-15 min;  
1500 mm long table;  
Capacity 4 frames/min.



#### Specifications (Electric Heated Blades):

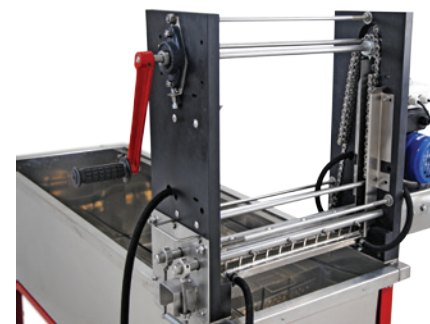
Blades motor – 0.18 kW;  
Feeding motor – 0.12 kW;  
Motor's rotational speed 9 rpm;  
Power supply 230V  
Heating power circuit 2 kw  
Liquid level indicator  
Warming the blades  
10-15 min;  
1500 mm long table;  
Capacity 4 frames/min.



### Uncapping Machine, manual

#### Specifications:

- » Blades motor – 0.18 kW;
- » Power supply 230V
- » Power steam 1500W
- » Steam Tank Capacity: 4 L
- » Steam Heat Up Time: 15 – 20 min
- » Steam Time: 60 min
- » 1500 mm long table;



A0239 Uncapping Machine, Manual **£1722.00**



### Uncapping Machine with Cappings Screw Press 230V

#### Specifications:

- » Blades motor – 0.18 kW;
- » Feeding motor – 0.12 kW;
- » Motor's rotational speed 9 rpm;
- » Power supply 230V
- » Heating blades 2x400 W;
- » Warming the blades 5 min;
- » 1500 mm long table;
- » Capacity 4 frames/min.



A0237 Uncapping Machine with Cappings Screw Press 230V **£5599.00**

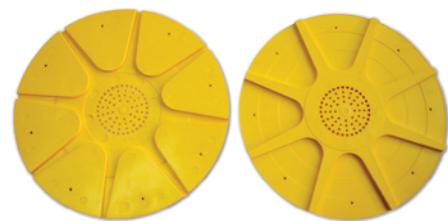
A0238 Uncapping Machine with Cappings Screw Press 230V - Closed Circuit **£5699.00**

#### Cappings Screw Press HONEY/WAX SEPARATOR 100kg/h;

- » capacity up to 100kg/h;
- » power supply 240V;
- » motor 0.55kW;
- » regulated motor rotation speed: max 9 rev/min.







**A0156**  
Large Plastic 8-way Escape  
**£2.50**



**A0157**  
Bucket Drip Holder S/S  
**£12.00**



Size:  
37cm×29.5cm

**A0163**  
**Cappings Bag.** These cappings bags are made for extractors, will work with most brands.  
**£12.99**



**A0159**  
Heather Honey Loosener  
– Metal  
**£21.00**



**A0160**  
Heather Honey Loosener  
– Plastic  
**£15.00**



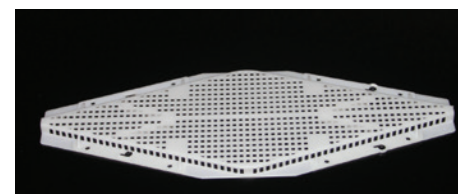
**A0161**  
Heather Loosener  
**£95.00**



**A0154**  
Honey blade for scraping honey from buckets, tanks. Stainless Steel.  
**£10.00**



**A0155**  
Honey Scraper – stainless steel. Overall length 16 cm  
**£10.00**



**A0353**  
Rhombus Bee Escape  
**£2.20**



**A0151**  
**Uncapping knife.** Blade 34 cm, made of stainless steel. Very sharp. Overall length 47 cm.  
**£10.00**



**A0153**  
Uncapping fork with wooden handle, stainless steel needles.  
**£6.90**



**A0152**  
Uncapping fork with wooden handle, 21 cranked stainless steel needles.  
**£10.00**

## Uncapping Table 500 mm



Flat bottomed with a stainless steel honey valve. Incorporates a stand for uncapped frames on plus a perforated drainage sieve beneath that allows honey from the cappings to drop into the lower tank. A cover for the table is available as an optional extra.

**Dimensions:**  
» 600mm long  
» 450mm wide  
» 8200mm high.



**A0241** Uncapping Table 500mm **£284.00**

## Uncapping Table and Wax Melter 2 in 1

- » Reinforced uncapping table;
- » Wheels;
- » Heated bottom 230V/650 W
- » Heated cover 230V, 2Kw
- » Length: 1000 mm
- » Reinforced uncapping table;
- » Wheels;
- » Heated bottom 230V/650 W
- » Heated cover 230V, 4Kw
- » Length: 1500 mm



**A0243** Uncapping Table and Wax Melter 2 in 1 – 1500mm **£1450.00**

**A0244** Uncapping Table and Wax Melter 2 in 1 – 1000mm **£1250.00**

## Uncapping Trays



**A0300**  
Uncapping Tray Stainless Steel  
Dimension: 47cm×49cm×6cm  
**£39.99**



**A0242**  
Uncapping tray with plastic sieve.  
Dimension: 40cm×60cm×20cm.  
**£39.99**

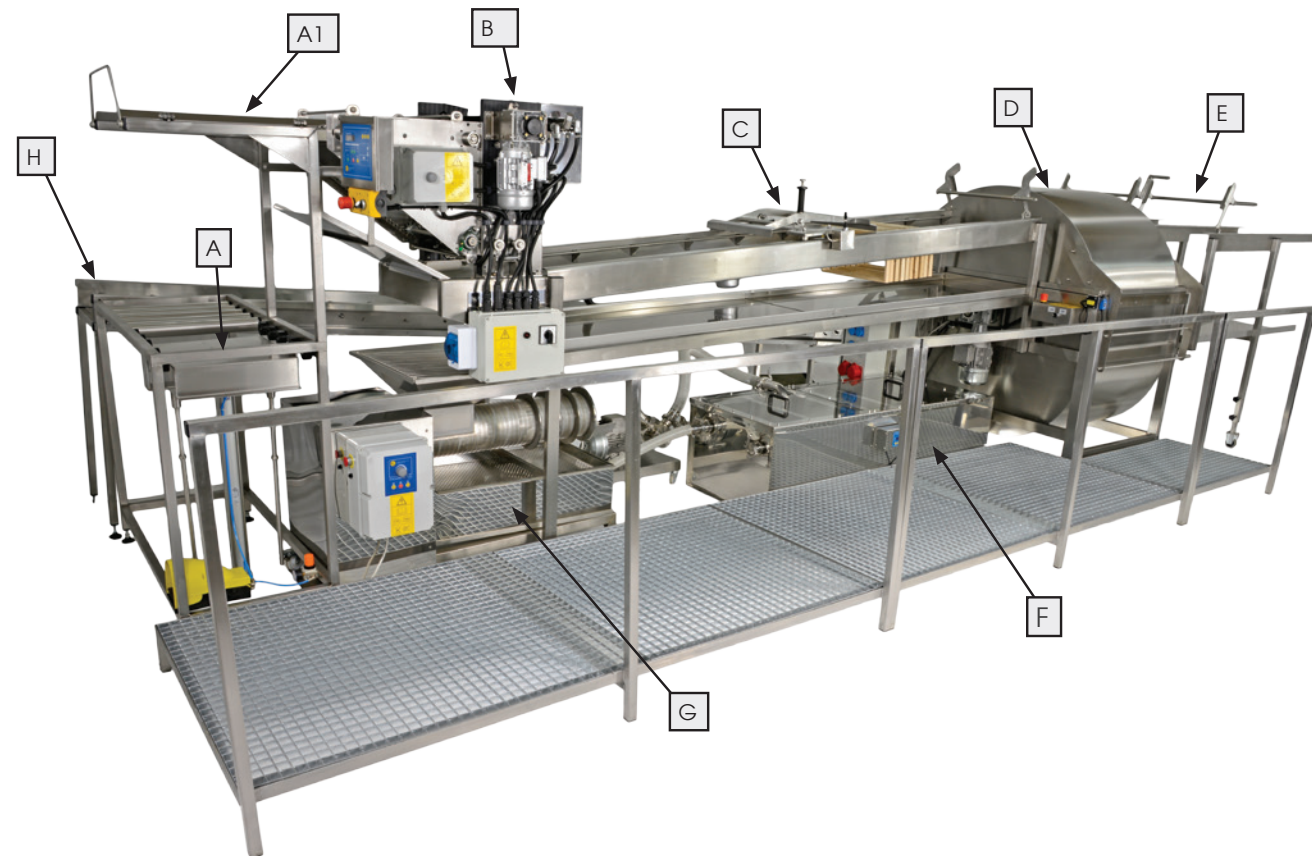


**A0240**  
Uncapping Tray with Spike  
Dimension: 41cm×61cm×20cm.  
Spike Ø6mm.  
**£55.00**



# Automatic honey extracting line

premium  
line



## Basic version:

- » Automatic uncapping device for frames **B** (capacity 5-10 frames/min, electrically heated blades)
- » Feeder for frames with hand loading cartload **CR**, combining uncapper with honey extractor
- » Radial honey extractor, horizontal **D**, for 52 frames, with automatic control (it has 7 programs)
- » Hanger for extracted frames **E**
- » Honey sump with a pump **F**
- » Extruder for cappings **G** (separating the honey from the wax), capacity 200 kg/h, 40 l container for dry wax.

## Full version:

- » Frames pneumatic ejector, chain feeder connected **A, A1**
- » Automatic frames uncapper with electrically heated knives **B** with a capacity of 5-10 frames/min,
- » Feeder for frames with electric loading cartload **C**
- » Radial honey extractor horizontal **D**, for 52 frames, with automatic control (it has 7 programs)
- » Hanger for extracted frames **E**
- » Honey sump with a pump **F**
- » Extruder for cappings **G** (separating the honey from the wax), capacity 200 kg/h, 40 l container for dry wax
- » Roller conveyor to nozzle bodies **H**

## A A1 Frames pneumatic ejector, chain feeder connected

- » Pneumatic ejector for the frames uses a pneumatic piston powered by a compressor, working pressure of about 2 bar (compressor not included).
- » Chain feeder with a capacity of 10-12 frames.
- » Electric drive motor power 0,12 kW (optional extra)



## B Automatic uncapper with closed circuit

- » Power drive knives: 0.18 kW;
- » Heated knives;
- » Knives warm-up time of about 20 min.;
- » Uncapping efficiency: 5-8 frames / min (depending on the frame type).



## C Feeder for frames with electrical loading cartload

- » Feeder for frames with loading cartload
- » Capacity 52-80 frames.
- » Loading cartload operated manually (in the basic version) or with electric drive (optional in the full version).



## D Horizontal honey extractor

- » Capacity 52-80 frames (depending on the frame type)
- » Motor power 1.5 kW;
- » Motor rpm : 2800 r / min;
- » Type of gear unit 50;
- » gear ratio 1:10;
- » Max. basket rotations: about 230/min;
- » Efficiency of honey extractor about 500 kg/1 h



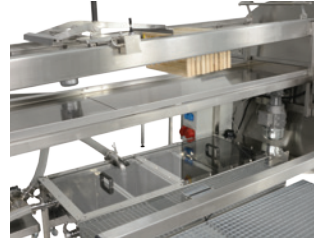
## E Hanger for uncapped frames

- » Capacity: 52-80 frames (depending on the frame type)



## F Honey sump with a pump

- » Honey sump with honey-level sensor and pump,
- » Sump capacity: 120 l
- » Pump capacity: up to 1500 l / h.
- » Pump power: 1,5 kW



## G Capping extruder

### Specifications:

- » Capacity: up to 200 kg/h
- » Power supply 230V
- » Power 1,1 kW
- » Regulated motor rotation speed: max 9 rev / min

### Dimensions:

- » Height: 92 cm
- » Width: 75 cm
- » Length: 135 cm



Capping screws are made using food grade stainless steel. They are designed to separate the honey from wax cappings, leaving the honey ready for filtering and the cappings dry and ready for melting.



## H Roller conveyor to bodies

- » Roller conveyor to bodies (optional extra charge)



W20961

Extractor Line Basic Option

POA

W20967

Extractor Line Full Option

POA



Honey filter

The Honey filter assembly is made with acid-resistant stainless steel. It is very easy to use and disassembles for cleaning and transport.



A0220 Honey filter £1100.00

Honey Sump

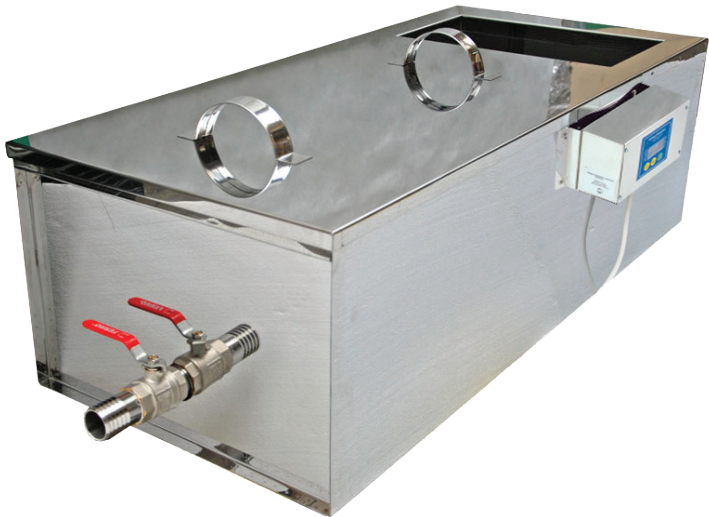
The honey sump is made from stainless steel and is equipped with perforated strainers for filtration. Strainers are easy to remove and clean.

A0214  
Honey Sump Length 1000mm  
» Power supply 230V/50Hz;  
» Temperature control from 30°C to 55°C (digital display);  
» Heating power 440W

External dimensions:  
» Length 1140mm  
» Height 350mm  
» Width 510mm

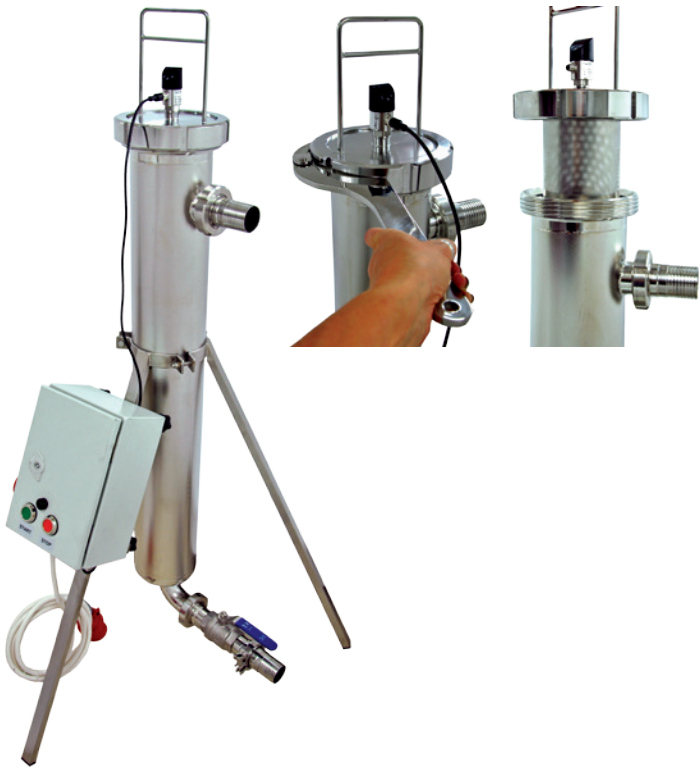
A0215  
Honey Sump Length 1500mm  
» Power supply 230V/50Hz;  
» Temperature control from 30°C to 55°C (digital display);  
» Heating power 520W

External dimensions:  
» Length 1640mm  
» Height 350mm  
» Width 510mm



Honey pressure filter

Vertical pressure filter, large area of filtration, designed for cold honey filtering. All components of pressure filter such as perforated filter, coat, bottom, connectors made of high quality acid-resistant stainless steel as standard. There is a perforated filter inside the device; cylinder-shaped, with the cylinder diameter of: 120mm and the length of 1000mm. The diameter of filtration slots: 1mm.



A0222 Honey pressure filter £1899.00

A0218	Honey Sump 1000mm	£619.00
A0219	Honey Sump 1500mm	£795.00
A0214	Stainless steel heated sump 1000mm	£933.00
A0215	Stainless steel heated sump 1500mm	£1149.00



A0340 Honey Cylindrical Strainer and Stand. £25.00



A0223 Cylindrical strainer with nylon fine mesh, 190 mm diameter (top), 150 mm diameter (bottom), depth 300 mm £12.00



A0224 Holder for Cylindrical Strainer £13.50



A0342 Capping Strainer and S/S Holder £25.00



A0341 Capping strainer 28 cm diameter (top), depth 24 cm. £12.00



A0343 Holder for Capping Strainer £13.50



A0346 Double PVC Honey Strainer Diameter of strainer is 29cm £13.50



A0217 Conical Strainer and Stand, 295mm Diameter £25.00



A0344 Conical Strainer £12.00



A0345 Holder for Conical Strainer £13.50



A0216 Stainless Steel Double Strainer £24.99



Packaging

A0294	10 Litre Food Grade Bucket: White honey storage bucket with plastic handle and lid. Food grade.	£2.99
A0295	20 Litre Food Grade Bucket: White honey storage bucket with metal handle, plastic grip and lid. Food grade.	£4.99
A0296	Bucket Stainless Steel	£19.99



Settling Tanks

A0232	Honey Settling Tank 70l	£199.00
A0231	Honey Settling Tank 100l	£235.00
A0230	Honey Settling Tank 200l	£249.00
A0229	Honey Settling Tank 300l	£325.00



Stand for honey settling tanks



A0325	30-70l	£29.00
A0234	100l	£45.00
A0233	300l	£55.00

Honey Tanks with Valve

A0297	14 kg Honey Tank with Valve + Lid	£14.00
A0298	28kg Honey Settling Tank with Valve + Lid	£14.99
A0299	42kg Honey Settling Tank with Honey Valve	£20.00



Stainless Steel Valve

Stainless Steel Valve to fit honey  
extractors. 40mm inside diameter,  
46mm outside diameter



A0228  
Stainless Steel Valve 1 1/2"  
£29.00

Stand for settler and jars

A0301  
Stand for settler  
and jars  
£75.00  
Stand for a settler with an extra  
shelf for jars.  
The solution enables easy and  
comfortable filling of the jars.



Honey Valve

This is a 39mm (1 1/2inch) plastic honey  
valve complete with 'o' ring seals to prevent  
leakage. All screws and nuts are made  
of stainless steel (not plastic that usually  
breaks). Suitable for food and honey in  
particular. Required hole size for fitting the  
valve = 48mm (1 7/8 inch).

A0227  
Honey Valve 1 1/2"  
£9.99  
A0226  
Honey Valve 2"  
£12.00



Settling Tanks "Premium Line"

premium  
line

Honey settling tanks are made of polished stainless  
steel (0.6mm). The bottom is conical with a drain pipe  
connected to a honey valve below the level of the  
settling tank. This allows all the honey to completely  
drain out. The "Premium Line" consists of: a drum,  
cover and round stand.

The stand is welded to the bottom of the settler and  
provides the space for the conical bottom, drain  
tube and Honey valve  
Honey settling tanks are equipped with stainless steel  
cover with a rubber seal that can be secured with  
clamps.



A0354	Stainless settler 30 l "Premium" with conical bottom, valve 5/4", with handles (Ø 400, total H: 445)	£195.00
A0355	Stainless settler 50 l "Premium" with conical bottom, valve 5/4", with handles (Ø 400, total H: 595)	£230.00
A0356	Stainless settler 70 l "Premium" with conical bottom, valve 5/4", with handles (Ø 400, total H: 760)	£240.00
A0357	Stainless settler 100 l "Premium" with conical bottom, valve 6/4", with handles (Ø 500, total H: 750)	£295.00
A0358	Stainless settler 150 l "Premium" with conical bottom, valve 2", with handles (Ø 500, total H: 910)	£340.00
A0359	Stainless settler 200 l "Premium" with conical bottom, valve 2", with handles (Ø 600, total H: 910)	£430.00



Capacity l	Diameter Ø	Thickness	High	Valve size	Lid Brace
30	400 mm	0,6 mm	445 mm	5/4 '	2
50	400 mm	0,6 mm	595 mm	5/4 '	2
70	400 mm	0,6 mm	760 mm	5/4 '	2
100	500 mm	0,6 mm	750 mm	6/4 '	3
150	500 mm	0,6 mm	910 mm	2'	3
200	600 mm	0,6 mm	910 mm	2'	3



Stainless steel tanks

premium  
line



All listed tanks are made of polished stainless steel with the thickness of 2 mm. The bottom is conical, which allows complete draining. A ball valve 2" is placed in the bottom. Tanks have a reinforced stand made of stainless steel and a stainless cover.



Tanks with heating option are equipped with a temperature control (temperature regulation between 30-55 °C).

- A0326 Stainless tank 500 l with cover and with integrated stand
- A0327 Stainless tank 1000 l with cover and with integrated stand
- A0328 Stainless tank 2000 l with cover and with integrated stand
- A0329 Stainless tank 500 l, with heating with cover and with integrated stand
- A0330 Stainless tank 1000 l, with heating with cover and with integrated stand
- A0331 Stainless tank 2000 l, with heating with cover and with integrated stand
- A0332 Stainless tank 500 l, with stirrer with cover and with integrated stand

- A0333 Stainless tank 1000 l, with stirrer" with cover and with integrated stand
- A0334 Stainless tank 2000 l, with stirrer with cover and with integrated stand
- A0335 Stainless tank 500 l, with stirrer and with heating with cover and with integrated stand
- A0336 Stainless tank 1000 l, with stirrer and with heating with cover and with integrated stand
- A0337 Stainless tank 2000 l, with stirrer and with heating with cover and with integrated stand

Detergents for removing honey residue

recommended to clean the honey extractors, settlers, drums, sieve heaters, uncapping devices, pumps and others.



1

Extractor, sieve, tank with honey residue.

2

After one minute, the foam can be wiped out.

3

Spray the detergent onto the surface to be cleaned

4

After few minutes, the foam drips own onto the bottom, leaving the sides nice and clean.

ELOXAN GL

Foaming detergent, high al-  
caline. Creates gel on desired  
surfaces, deeply penetrating the  
dirty area. Effectively removes  
honey residue. Needs rinsing  
after use. Ready to use.

A0303  
£9.50



BONSAN

Alcalic foaming  
concentrated detergent. Characte-  
rized by high anti-corrosion protec-  
tion. Perfect for removing all kinds of  
organic contamination. Dillute with  
hot water. Needs rinsing after clea-  
ning.

A0306  
£9.90



ANESAN

Concentrated  
detergent for manual cleaning of  
various devices and removing hon-  
ey residue. Dillute with hot water.  
Needs rinsing after cleaning.

A0304  
£6.20

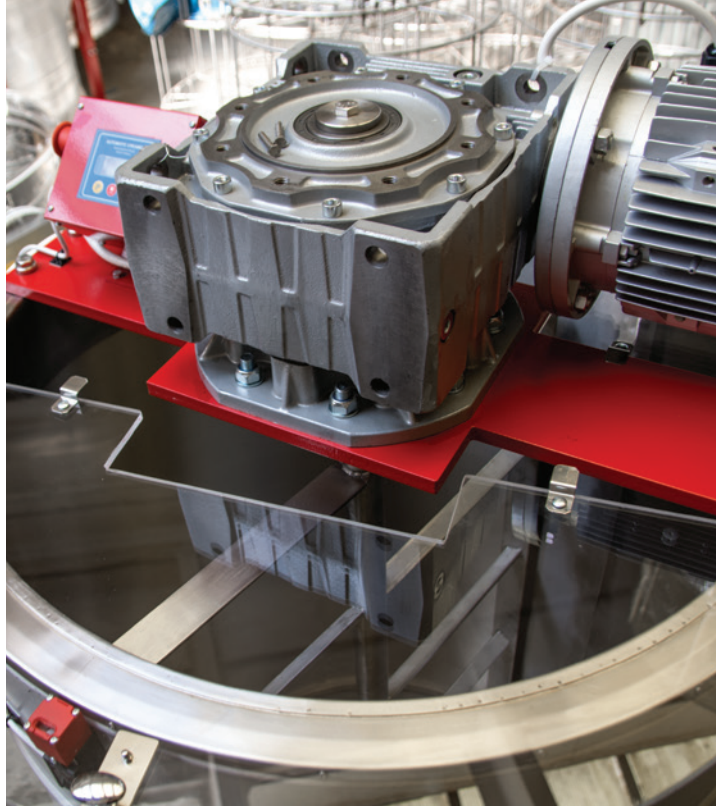


BAKTOSAN

Detergent for quick disinfection of  
various surfaces (devices, tables,  
barrels, tanks). No need to rinse.

A0305  
£6.50





# Creaming Machines

## Honey Creaming and Liquefier Machines



A0016	Honey Creaming and Liquefier Machine 50L	£1195.00
A0017	Honey Creaming and Liquefier Machine 70L	£1450.00
A0018	Honey Creaming and Liquefier Machine 100L	£1695.00
A0019	Honey Creaming and Liquefier Machine 150L	£1999.00
A0020	Honey Creaming and Liquefier Machine 200L	£2320.00

These machines have two main functions. They are designed to melt set honey and cream it. Electric heating cables placed around the drum provide uniform heating of the honey within the tank. A temperature controller prevents the honey from overheating.

<b>Specifications:</b> <ul style="list-style-type: none"> <li>» 50L capacity;</li> <li>» 240V power supply;</li> <li>» 0.18kW motor;</li> <li>» Frequency 50Hz;</li> <li>» 400mm Diameter drum</li> <li>» 440mm Height</li> <li>» Stainless steel valve</li> </ul>	<b>Specifications:</b> <ul style="list-style-type: none"> <li>» temperature control from 30°C to 70°C (digital display);</li> <li>» stainless steel valve</li> </ul>
<b>Specifications:</b> <ul style="list-style-type: none"> <li>» 70L capacity;</li> <li>» 240V power supply;</li> <li>» 0.18kW motor;</li> <li>» 175W heating power</li> </ul>	<b>Specifications:</b> <ul style="list-style-type: none"> <li>» temperature control from 30°C to 70°C (digital display);</li> <li>» stainless steel valve</li> </ul>
<b>Specifications:</b> <ul style="list-style-type: none"> <li>» 100L capacity;</li> <li>» 240V power supply;</li> <li>» 0.55kW motor;</li> <li>» 250W heating power</li> </ul>	<b>Specifications:</b> <ul style="list-style-type: none"> <li>» temperature control from 30°C to 70°C (digital display);</li> <li>» stainless steel valve</li> </ul>
<b>Specifications:</b> <ul style="list-style-type: none"> <li>» 150L capacity;</li> <li>» 240V power supply;</li> <li>» 1.1kW motor;</li> <li>» 440W heating power</li> </ul>	<b>Specifications:</b> <ul style="list-style-type: none"> <li>» temperature control from 30°C to 70°C (digital display);</li> <li>» stainless steel valve</li> </ul>
<b>Specifications:</b> <ul style="list-style-type: none"> <li>» 200L capacity;</li> <li>» 240V power supply;</li> <li>» 1.1kW motor;</li> <li>» 520W heating power</li> </ul>	<b>Specifications:</b> <ul style="list-style-type: none"> <li>» temperature control from 30°C to 70°C (digital display);</li> <li>» stainless steel valve</li> </ul>

## Honey Creaming Machines



The creaming machine is made from food grade stainless steel. The creaming process is performed in a repetitive "work – break" cycle and the mixer works for 15 minutes and then stands for 1hr. This process is repeated for 2-3 days to produce a quality honey with a similar consistency to butter.

A0011	Creaming Machine 230V, cap. 50l	£795.00
A0012	Creaming Machine 230V, cap. 70l	£850.00
A0013	Creaming Machine 230V, cap. 100l	£995.00
A0014	Creaming Machine 230V, cap. 150l	£1250.00
A0015	Creaming Machine 230V, cap. 200l	£1425.00



<b>Specifications:</b> <ul style="list-style-type: none"> <li>» 50L capacity;</li> <li>» 240V power supply;</li> <li>» 0.18kW motor;</li> <li>» Frequency 50Hz;</li> <li>» 400mm Diameter drum</li> <li>» 440mm Height</li> <li>» Stainless steel valve</li> </ul>	<b>Specifications:</b> <ul style="list-style-type: none"> <li>» 70L capacity;</li> <li>» 240V power supply;</li> <li>» 0.25kW motor;</li> <li>» Frequency 50Hz;</li> <li>» 400mm Diameter drum</li> <li>» 610mm Height</li> <li>» Stainless steel valve</li> </ul>	<b>Specifications:</b> <ul style="list-style-type: none"> <li>» 100L capacity;</li> <li>» 240V power supply;</li> <li>» 0.37kW motor;</li> <li>» Frequency 50Hz;</li> <li>» 500mm Diameter drum</li> <li>» 610mm Height</li> <li>» Stainless steel valve</li> </ul>	<b>Specifications:</b> <ul style="list-style-type: none"> <li>» 150L capacity;</li> <li>» 240V power supply;</li> <li>» 1.1kW motor;</li> <li>» Frequency 50Hz;</li> <li>» 500mm Diameter drum</li> <li>» 730mm Height</li> <li>» Stainless steel valve</li> </ul>	<b>Specifications:</b> <ul style="list-style-type: none"> <li>» 200L capacity;</li> <li>» 240V power supply;</li> <li>» 1.1kW motor;</li> <li>» Frequency 50Hz;</li> <li>» 600mm Diameter drum</li> <li>» 730mm Height</li> <li>» Stainless steel valve</li> </ul>
--	--	---	--	--

## Honey Creaming Machine 33L

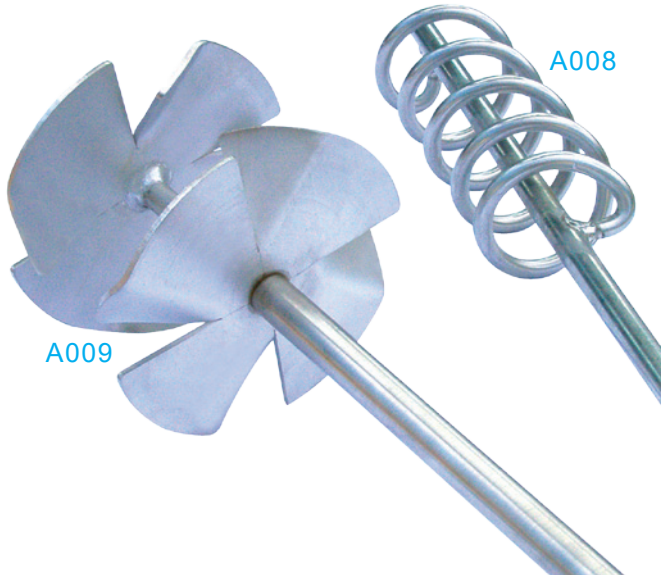
This is the basic honey creamer fitted to a 42kg plastic honey tank.



A0010  
Honey Creaming Machine 230V, cap 42kg (plastic)  
£349.00

## Honey Creaming Machine 33L

A008  
Stainless steel honey creamer, 60 cm long, Ø6cm.  
£35.00  
A009  
Honey Creamer Paddle, fits on drill.  
£35.00







## Auger Honey Pump

Auger system for moving honey from drum to buckets or to the filters and bottling tanks.

### Specifications:

- » 1.5 kW;
- » 1500L to 3000L of honey/hr
- » 400 V power supply ;
- » Rotation: 2800 rpm

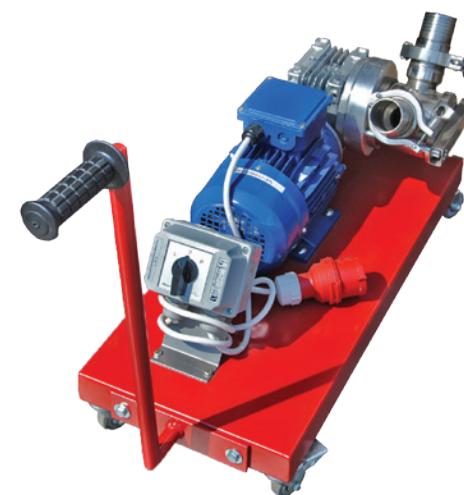


A0024  
Auger Honey  
Pump  
£895.00



## Pumps

### Honey pump 0.37kW



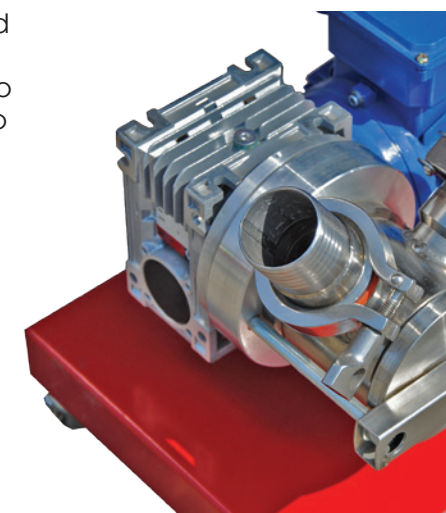
This piece of equipment is designed to pump honey from one tank to another. It is useful when needing to move honey from a sump device to storage tank/buckets.

### Specifications:

- » 0.37kW;
- » 900L of honey /hr when honey is at a temperature of 30°C;
- » 230 V power supply and smooth adjustment;
- » New easy and readable control.

A004

Honey pump 0.37 kW  
£1199.00



### Honey pump 1.5kW



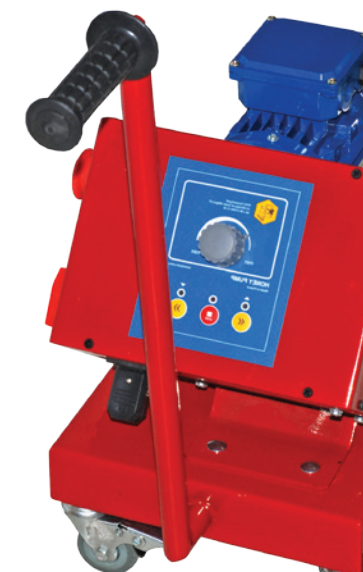
This piece of equipment is designed to pump honey from one tank to another. It is useful when needing to move honey from a sump device to storage tank/buckets.

### Specifications:

- » 1.5kW
- » 1500L of honey /hr when honey is at a temperature of 30°C;
- » 230 V power supply and smooth adjustment;
- » New easy and readable control.

A005

Honey pump 1.5 kW  
£1425.00



### Honey Level Alarm

Honey Level Alarm. As soon as the honey reaches the alarm's floater, the floater will activate the alarm.

It works with 9-volt battery. Independently. Loud signal.

A0025

Honey Level Sensor  
£165.00



### Akcesoria



A007	Pipe for honey Pump Ø40	£28.00
A006	Pipe for honey Pump Ø50	£30.00
A0162	Pipe Holder S/S	£14.99





# Capping Screw

Capping screws are made using food grade stainless steel. They are designed to efficiently separate honey from wax cappings, leaving the honey ready for filtering and the cappings dry and ready for melting. A rotating, perforated cylinder compresses the cappings whilst the honey runs through the holes on the outside of the module onto a strainer below. The wax is pushed through the screw where it is compressed leaving it clean and ready for melting.

This machine can also be used for extracting combs of heather honey instead of laboriously pressing them with a fruit press.

## Cappings Screw Press Honey/Wax Separator 50kg/h

- » capacity up to 50kg/h;
- » power supply 230V;
- » motor 0.3kW;
- » regulated motor rotation speed: max 9 rev/min.

## Cappings Screw Press Honey/Wax Separator 100kg/h

- » capacity up to 100kg/h;
- » power supply 240V;
- » motor 0.55kW;
- » regulated motor rotation speed: max 9 rev/min.

## Cappings Screw Press Honey/Wax Separator 200kg/h

- » capacity up to 200kg/h;
- » power supply 240V;
- » motor 1.1kW;
- » regulated motor rotation speed: max 9 rev/min.



A0067	Cappings Screw Press HONEY/WAX SEPARATOR 50kg/h	£1899.00
A0065	Cappings Screw Press HONEY/WAX SEPARATOR 100kg/h	£3499.00
A0066	Cappings Screw Press HONEY/WAX SEPARATOR 200kg/h	£4850.00

## Honey Dryer 150kg

premium  
line

Honey dryer removes moisture from honey, will dry 150kg of honey down by around 2-3% in 10 hours. This device is suitable for heather honey.

### Specifications:

- » Capacity up to 150kg, 110 Litre;
- » Power supply 240V;
- » Motor 370W;
- » Heating 1200W;
- » Regulated motor rotation speed: max 9 rev/min.

A0259

Honey Dryer 150kg (110l)

£3500.00



## Honey Dryer 300kg

premium  
line

Honey dryer removes moisture from honey, will dry 300kg of honey down by around 1-2% in 10 hours. This device is suitable for heather honey.

### Specifications:

- » Capacity up to 300kg, 215 Litre;
- » Power supply 240V;
- » Motor 550W;
- » Heating 1200W;
- » Regulated motor rotation speed: max 9 rev/min.

A0260

Honey Dryer 300kg (220l)

£4500.00





# ControlBee

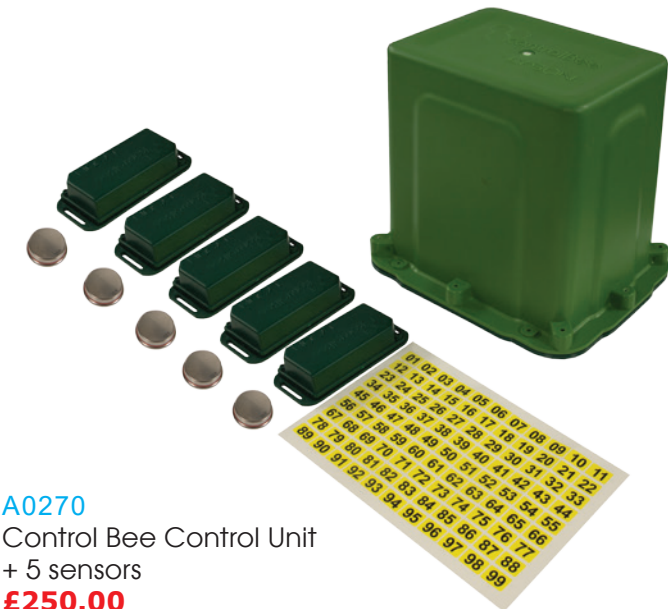
ControlBee is a unique electronic apiary protection and control system that uses your mobile phone text message system (SMS) to provide you with information about the current status of your hives. The system helps protect your remote apiary from vandalism and theft by providing instant notification should any hives be disturbed.

**Product Description:**

There are two parts to the system.

» **The first part is a durable fully waterproof control unit equipped with an anti-tamper sensor.** The control unit is responsible for receiving signals from the sensors and relaying that information to your phone. It can be discretely located anywhere in your apiary up to 150m from the hives. It is powered with a built-in 12V battery with an approximate 70 days life. You will require a sim card for it to be able to send you messages.

» **The second part is the sensors.** These are mounted inside your hives and communicate with the control unit (encrypted). They can be positioned horizontally or vertically and have 2 sensitivity settings. Capable of operating over a wide range of temperatures (-30°C to +70°C), with a battery life of approximately 12 months.



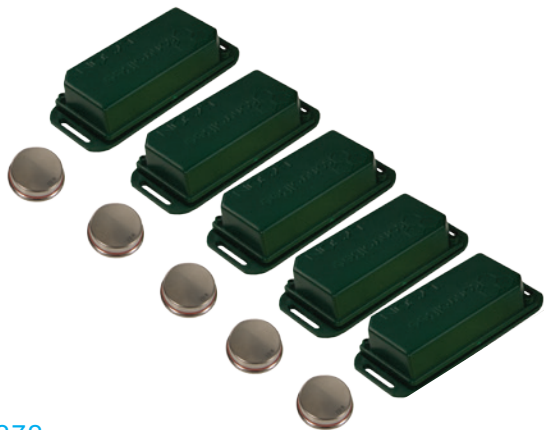
**A0270**  
Control Bee Control Unit  
+ 5 sensors  
**£250.00**



## Control Bee sensor

**Product Description:**

» Mount the sensor inside the hive by screwing it to the wall or the roof. Make sure to use two screws, one in each mounting hole of the sensor's housing. Depending on the configuration it may be done in horizontal or vertical position.



**A0272**  
Control Bee sensor (green), with battery without GPS  
**£30.00**  
**A0271**  
Control Bee sensor (green) x 5, with battery without GPS  
**£135.00**

## ControlBee Hive/Window/Door alarm

**Product Description:**

» A magnetic alarm which can be used on hives, or at home on doors or windows. The unit needs to be positioned on a moveable part and the magnetic sensor mounted adjacent to it, such that when a hive roof/window is opened the magnetic contact is broken and the alarm is triggered.



**A0273**  
Control Bee door/window sensor (black), with battery without GPS  
**£30.00**



## Honey Warming Cabinet

Professional quality – CE certified (International safety compliance standard)

<b>A0115</b>	Honey Warming Cabinet 50cm	<b>£495.00</b>
<b>A0116</b>	Honey Warming Cabinet 74cm	<b>£599.00</b>



# Honey Warming



**Honey Warming Cabinet 70cm**  
» Holds six buckets 15lb or two bucket 30lb;  
» Equipped with thermostat up to 60°C;  
» Easy to clean;  
» 2 stainless steel trays;  
» Inside dimensions: 50cm W x 50cm D x 70 cm H;  
» Outside dimensions: 68cm W x 54cm D x 74cm H;  
» Holds (buckets): 6x 15lb or 2x 30lb  
» 230V, 350W;  
» 2 year warranty.  
**Honey Warming Cabinet 50cm**  
» Holds three buckets 15lb or one bucket 30lb;  
» Equipped with thermostat up 60°C;  
» Stainless steel tray  
» Easy to clean;  
» Inside dimensions: 50cm W x 50cm D x 50cm H;  
» Outside dimensions: 68cm W x 54cm D x 50cm H;  
» Holds (buckets): 3x 15lb or 1x 30lb  
» 230V, 250W;  
» 2 year warranty.



Single Drum Heater



A warming cabinet is used to gently liquefy set or crystallized honey. The cabinet is equipped with a heating element, fan, insulated walls, thermostat and digital LCD temperature controller. The fan ensures even distribution of warm air throughout the cabinet with no hot spots.

Product Description:

- » Power supply- 230V / 50Hz
- » Temperature setting range: 30-55°C
- » Heating – 2 kW
- » External diameter: 1000mm×1160mm×1400mm
- » Internal diameter: 920mm×1120mm×1320mm

A0122	Warming cabinet for one barrel 300 KG	£1150.00
-------	---------------------------------------	----------

Drum Heating Cabinet for Pallet 120×120 cm



A warming cabinet is used to gently liquefy set or crystallized honey. The cabinet is equipped with a heating element, fan, insulated walls, thermostat and digital LCD temperature controller. The fan ensures even distribution of warm air throughout the cabinet with no hot spots.

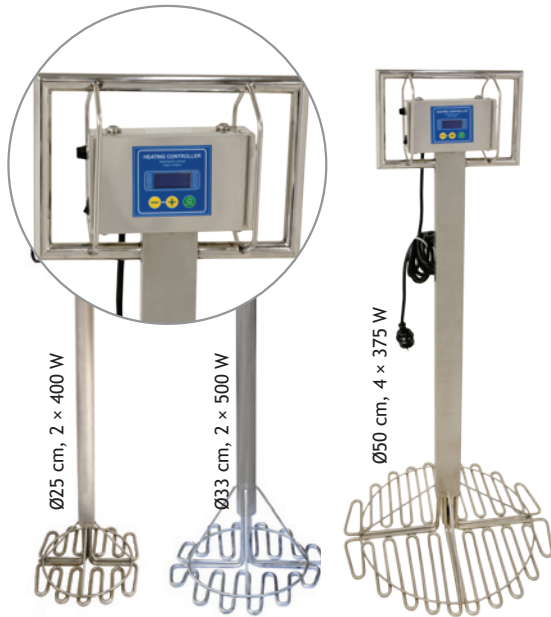
Product Description:

- » Power supply- 230V / 50Hz
- » Temperature setting range: 30-55°C
- » Heating – 2 kW
- » Wheels
- » External diameter: 1390mm×1100mm×1450mm
- » Internal diameter: 1300mm×1060mm×1355mm

A0123	Drum Warming Cabinet Pallet 1.2m×1.2m	£1399.00
-------	---------------------------------------	----------

Honey Heater

The honey heater is a device used to liquefy honey. Unit is equipped with a heating element, thermostat and digital LCD temperature controller.



Honey Heater Ø250

- » Diameter of heater: 25cm
- » Total height: 101cm
- » Power supply- 230V / 50Hz
- » Temperature setting range: 30-55°C
- » Heating – 2 x 400W
- » Height; (up to this level the heater can be immersed): 84cm

Honey Heater Ø330

- » Diameter of heater: 33cm
- » Total height: 101cm
- » Power supply- 230V / 50Hz
- » Temperature setting range: 30-55°C
- » Heating – 2 x 500W
- » Height; (up to this level the heater can be immersed): 84cm

Honey Heater Ø500

- » Diameter of heater: 50cm
- » Total height: 110cm
- » Power supply- 230V / 50Hz
- » Temperature setting range: 30-55°C
- » Heating – 4 x 375W
- » Height; (up to this level the heater can be immersed): 90cm

A0124	Honey Heater Ø250	£399.00
A0125	Honey Heater Ø330	£430.00
A0126	Honey Heater Ø500	£460.00

Honey Liquifier, Decrystilizer

Bottling & store honey tank, liquifying honey in jars or buckets. Very well made, stainless steel, Supply voltage: 230V/50Hz ± 10% Temperature setting: 5 – 55°C

A0118	Honey Liquefier, Decrystilizer 55l	£599.00
A0119	Honey Liquefier, Decrystilizer 70l	£692.00
A0121	Honey Liquefier, Decrystilizer 100l	£753.00



Manual wax press “LYSON”

Specifications:

- » Made of stainless, acid-resistant steel.
- » Stand made of black coated steel
- » Uncappings tank slot diameter: 250 mm
- » Uncappings tank height: 355 mm
- » Press height (without a knob): 725 mm
- » Effluent tray lenght: 390 mm
- » Effluent tray width: 345mm

Press is used for recovering of honey from uncappings that are left out as a residue in uncapping process. There is still a lot of honey to be extracted from it. Cold-press method can be used to do so.

A0302	Manual wax press “LYSON”	£195.00
-------	--------------------------	---------



Dough mixer, stainless

Designed for production of honey-sugar dough. When in use, the rotation direction should be counterclockwise. The total time of dough making (approx. 40 min) depends on the required consistency (longer grinding = denser dough). Blender needs to be affixed to the ground when in use.

Chamber and blending blades made of stainless acid-resistant steel. Capacity: 10kg of dough Power supply: 400V Power: 0,75 kW



A0307	Dough mixer, stainless	£850.00
-------	------------------------	---------





# Bottling Machine with Stand



An excellent machine for bottling, creaming and pumping honey, filling up to 350 lb jars per hour.

A001  
Bottling Machine with Stand  
£1599.00

- » Honey bottler with creaming function;
- » Filling accuracy of +/- 1g;
- » Filling range from 4g to 45kg;
- » Made from food grade stainless steel and food grade plastics;
- » A non-drip pump dispenser;
- » 230V/200W power supply.

The bottling machine comes with the following pieces of equipment:

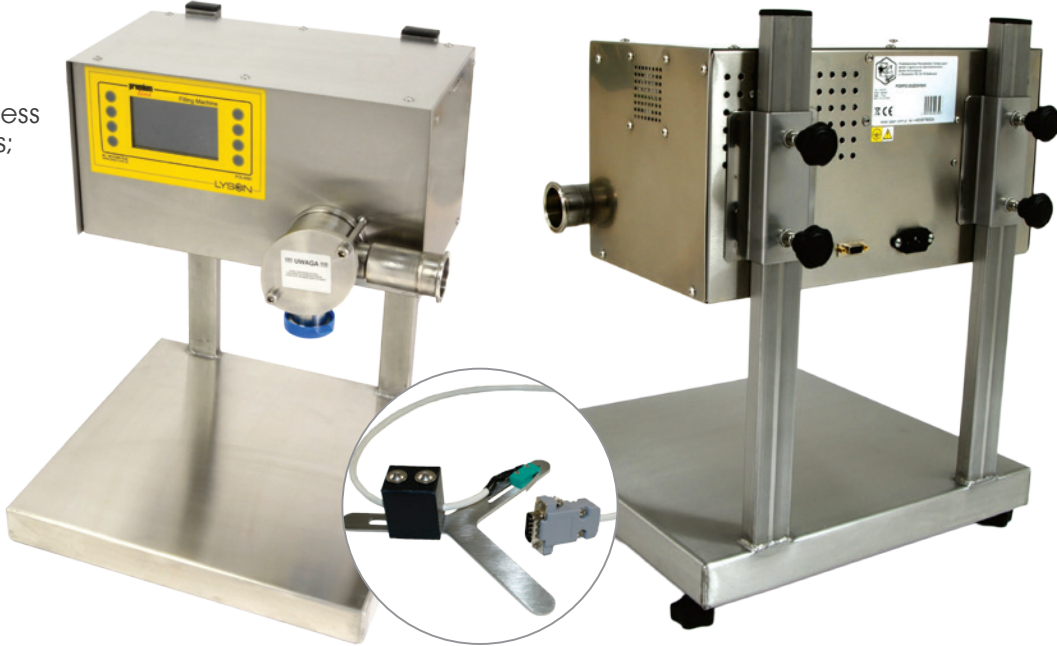
- » Dispensing starter peddle;
- » 1.5 meter Hose pipe;
- » Connection clamp for the pump and hose;
- » Stainless steel stand.



# Bottling Machine with Stand - Premium Line

A0371  
Bottling Machine with Stand - Premium Line  
£1950.00

- » Honey bottler with creaming function;
- » Filling accuracy of +/- 1g;
- » Filling range from 4g to 45kg;
- » Made from food grade stainless steel and food grade plastics;
- » A non-drip pump dispenser;
- » 230V/200W power supply.



# Bottling Machine with mini turn table



A002  
Bottling Machine with mini turn table  
£2200.00

An excellent machine for bottling, creaming and pumping honey, filling up to 350 lb jars per hour. The size of the table and racks can be reduced allowing it to fit into smaller work spaces making it easier to be controlled by one operator.

- Specifications:**
- » Honey bottler with creaming function;
  - » Filling accuracy of +/- 1g;
  - » Filling range from 4g to 45kg;
  - » Made from food grade stainless steel and other approved material for food production;
  - » A non drip pump dispenser;
  - » 230V/200W power supply.

**Dimensions of the mini turn table:**

- » Length: 81cm;
- » Base width: 50cm
- » Height: 63,5cm
- » Turntable diameter: 60cm

# Bottling Machine with Automatic Turntable

This is the same specifications as the bottling machine above but comes with an automatic turntable:

- Specifications:**
- » Diameter of the table's surface: 90cm;
  - » Height: 82cm;
  - » Minimum sized jars: 3cm wide – 4.5cm high;
  - » Maximum sized jars: 15cm wide – 30cm high;
  - » Includes a turning motor 230V/200W.



The automatic turntable won gold medal at the Poznan International Trade Fair of Food Processing Technologies 2011.



A003  
Bottling Machine with Automatic Turntable  
£3250.00



# Automatic Honey Bottling Line



Designed for single operator use.  
The conveyor belt for carrying jars stops automatically when a jar arrives at the dispenser.  
Filling range from 250g (9oz) to 1250g (2.7lb) .

A0023  
Automatic Honey Bottling Line  
**£5999.00**

- » Overall length 3.8 m;
- » Each section is individually controlled;
- » Table power 200 W/pc;
- » Filling machine power 370W;
- » Both turntables and filling machine are made of acid-resistant stainless steel.



**The Professional Line Filling machine** fills around 350 jars of 500g per hour depending on type and density of honey.  
Accuracy; +/- 1g  
Filling range from 250g to 45kg.  
Made from food grade stainless steel and food grade plastics.



A0021  
100 litre heated tank with stand for automatic honey bottling line.  
**£1499.00**

100 litre heated tank for maintaining suitable honey temperature during the filling process.

A0022  
Dual chambered 300 litre heated tank with stand.  
**£2850.00**

Dual chambered 300 litre heated tank for maintaining suitable honey temperature during the filling process. It consists of two separate chambers of 150 litres each.



Power supply: 230V  
Heating power: 520W



Power supply: 230V  
Heating power: 1 kW

# Mini honey extracting line



The mini line for uncapping and extracting honey has been designed for medium-sized apiaries.  
It is two-section device for 40 frames with the manual ejector.



**Dimensions of the mini uncapping and extracting line:**  
» Total length: 318 cm  
» Total width: 135 cm  
» Total height: 157 cm

Horizontal honey extractor is dedicated for 30 frames.



# Wax Melting

## Guide to using the wax melter.

- » 1. Fill the tank with water to the drain pipe level.
- » 2. Fill the basket with frames or dried honeycombs
- » 3. Put the lid on.
- » 4. Place the gas burner under the centre of the wax melter such that it heats the whole bottom surface
- » 5. Wait until the steam is generated and collect the melted wax, which will flow out through the drain pipe. Caution wax is hot!
- » 6. After wax stops flowing carefully check the water level and top up if required.

## Gas Steam Wax Melter LARGE



### Specifications:

Material: stainless steel  
total height: 820 mm

### Tank dimensions:

- » length: 580 mm,
- » width: 420 mm,
- » height: 610 mm
- » drain diameter: 1"

Perforated basket with functional handles, made entirely of stainless steel

### Frame basket dimensions

- » length: 530 mm,
- » width: 335 mm,
- » height: 440 mm



A0249

Gas Steam Wax Melter  
LARGE

£599.00

Free: Gas stool with thermocouple - supply: LPG

## Gas Steam Wax Melter SMALL



### Specifications:

Material: stainless steel

### Tank dimensions:

- » length: 515 mm,
- » width: 360 mm,
- » height: 495 mm,
- » drain diameter: 1"

### Frame basket dimensions:

- » length: 445 mm,
- » width: 290 mm,
- » height: 330 mm

### Capacity of the wax melting machine:

13 Dadant honey combs

Free: gas stool  
Power supply: LPG

A0348

Gas Steam Wax Melter  
SMALL

£450.00

Free: Gas stool with thermocouple - supply: LPG

## Gas Steam Wax Melter INSULATED



### Specifications:

Material: stainless steel

### External tank dimensions:

- » length: 588 mm,
- » width: 518 mm,
- » height: 618 mm (with legs - 808 mm)
- » drain diameter: 1"

### Frame basket dimensions:

- » length: 445 mm,
- » width: 372 mm,
- » height: 440 mm

### Capacity of the wax melter:

- » 10-20 honey frames (depending on frame size)
- » Free: gas stool
- » Power supply: LPG

A0349

Gas Steam Wax Melter  
INSULATED

£690.00

Free: Gas stool with thermocouple - supply: LPG

## Gas Steam Wax Melter MAX

### Tank dimensions:

- » external height: 830 mm
- » external width and length: 1154 mm x 1154 mm

### Frame basket dimensions:

- » height: 430 mm
- » width and length: 990 mm x 990 mm

### Specifications:

- » Material: stainless steel
- » Power supply (of the gas stool): LPG
- » drain diameter: 40 mm: 2 pcs
- » water drain diameter: 25 mm

### Additional equipment

A set of wheels is available at extra cost.

NOTE: Devices may be used outside or in well ventilated rooms.



A0248

Wax melter for 100 frames  
Dadant

£1199.00

## Solar Wax Melter

Uses the sun to melt burr combs and other small bits of wax. The melter produces wax of high quality. Comes complete with strainer grid, stainless steel and collection tray. Double glazed lid. Strong construction.



### Weight:

- » 20 kg.

### Dimensions:

- » 67cmx53cmx34cm

A0250

Solar Wax Melter

£139.00

## Kochstar SM

Kochstar. Capacity 27l. Thermosta from 30°C to boiling. Plastic Lid. 1800 Watt. Ø35 cm.



A0253

Kochstar

£135.00

## Multifunction Steam Boiler

Can be used for: sterilization of frames, boiling water, melting wax. The fireplace is designed for wood, coal etc. Weight 50 kg. Other sizes available from 60 - 200 litres.



A0252

Multifunction Steam Boiler

£249.00

## Steam Wax Melter

Comes with the following pieces of equipment:

- » Polypropylene container, cap. 33l
- » Basket stainless steel, cap. 20l
- » Metal stand
- » Tray for wax
- » Steam generator
- » Voltage 230V/50Hz
- » Power - 1800 W
- » Capacity - 4 l



A0251

Steam Wax Melter -  
Plastic bucket

£147.00



# Universal Honey Label

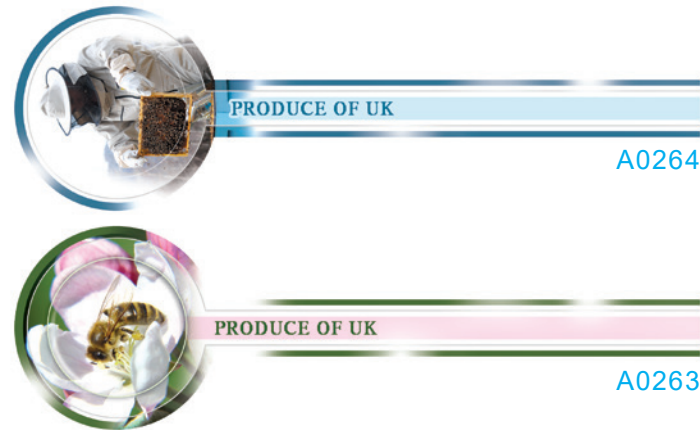
size 116x50mm, pack of 100



Universal Honey Label  
size 116x50mm, pack of 100  
£3.50

# Universal Tamper Evident Label

size 41x145mm, pack of 100



Universal Honey Label  
size 41x145mm, pack of 100  
£3.50

# Universal Tamper Evident Label

size 41x181mm, pack of 100



Universal Honey Label  
size 41x181mm, pack of 100  
£3.50



A0360	Made for 3 x 12oz hexagonal jars, pack 10	--
A0361	Made for 3 x 12oz hexagonal jars, pack 10	--
A0363	Box for 3 circular jars 1 ½ Oz (42g)	--
A0364	Box for 3 circular jars 1 ½ Oz (42g)	--
A0365	Box for 3 circular jars 1 ½ Oz (42g)	--
A0366	Box for 3 circular jars 1 ½ Oz (42g)	--
A0369	Box for 3 circular jars 1 ½ Oz (42g)	--
A0370	Box for 3 circular jars 1 ½ Oz (42g)	--







# Candle Moulds



**A0372**  
Ambrosius  
Height: 21 cm  
Wick: 3  
**£46.90**



**A0060**  
Baby with Heart  
Height: 11cm  
Wick: 3x10  
**£19.50**



**A0373**  
Bear with Barrel  
Height: 7cm  
Wick: 3x10  
**£10.20**



**A0028**  
Bee  
Ø4cm  
**£1.99**



**A0374**  
Chicklet in Egg  
Height: 9.5 cm  
Wick: 3x8  
**£16.90**



**A0057**  
Christmas Tree  
Height: 11.5 cm  
Wick: 3x10  
**£21.99**



**A0375**  
Cone, medium  
Height: 7.5 cm  
Wick: 3x13  
**£17.80**



**A0376**  
Crimson Rose  
Height: 4cm  
Wick: 3x8  
**£11.20**



**A0056**  
Cube Honeycomb  
Height: 6 cm  
Wick: 2  
**£21.00**



**A0377**  
Cube, small  
Height: 4.5 cm  
Wick: 3x10  
**£11.99**



**A0378**  
Pillar  
Height: 16 cm, Ø 6 cm  
Wick: 3x16  
**£19.99**



**A0379**  
Pillar, casted  
Height: 9.5 cm, Ø 7.5 cm  
Wick: 3  
**£19.70**



**A0380**  
Pillar, striped  
Height: 11 cm, Ø6 cm  
Wick: 3x16  
**£17.80**



**A0381**  
Duck  
Height: 4.5 cm  
Wick: 3x10  
**£10.80**



**A0382**  
Tealight Rose  
Ø4.5 cm  
Wick: 3x6  
**£7.60**



**A0032**  
Elephant  
Height: 4.5cm  
Wick: 3x8  
**£7.95**



**A0027**  
Skep Small  
Height: 4.5cm  
Wick: 3x8  
**£4.95**



**A0383**  
Marguerite, floating  
Ø5 cm  
Wick: 3x6  
**£8.80**



**A0034**  
Lion  
Height: 6cm  
Wick: 3x8  
**£8.60**



**A0384**  
Little Bee  
Height: 6.5cm  
Wick: 3x6  
**£9.00**



**A0039**  
Easter egg  
Height: 4cm, Ø4.5 cm  
Wick: 3x6  
**£9.95**



**A0043**  
Pine Cone  
Height: 8cm, Ø3 cm  
Wick: 3x10  
**£13.95**



**A0064**  
Hedgehog with Ladybird  
Height: 5.5cm  
Wick: 3x6  
**£10.80**



**A0385**  
Little Hedgehog  
Height: 4cm  
Wick: 3x10  
**£10.80**



**A0386**  
Egg with Pattern  
Height: 5.6cm, Ø4.5 cm  
Wick: 3x10  
**£11.20**



**A0037**  
Honeycomb with Bees  
Height: 7cm, Ø4 cm  
Wick: 3x10  
**£8.99**



**A0059**  
Turtle Emil  
Wick: 3x6  
**£12.45**



**A0387**  
Muffin  
Height: 6cm  
Wick: 3x10  
**£12.60**



**A0063**  
Turtle  
Height: 3cm  
Wick: 3x6  
**£13.00**



**A0050**  
Owl  
Height: 8cm  
Wick: 3x8  
**£17.45**



**A0041**  
Skep Large  
Height: 7.5cm  
Wick: 3x10  
**£12.99**



**A0058**  
Santa  
Height: 7cm  
**£13.95**



A0055  
Hive  
Height: 9.5cm  
Wick: 3x10  
£19.99

A0048  
Honeycomb and Bee  
Height: 16cm, Ø3cm  
Wick: 3x10  
£17.00

A0052  
Flowers  
Height: 9.5cm Ø4 cm  
Wick: 1,5  
£18.99

A0388  
Fairy Christmas Tree  
Height: 14.5cm  
Wick: 3x13  
£17.30

A0054  
Plain  
Height: 20cm  
Wick: 3x10  
£19.60

A0053  
Spiral  
Height: 20cm  
Wick: 3x10  
£19.60

A0062  
Volkswagen Beetle Car  
Height: 5cm  
Wick: 3x10  
£18.00

A0038  
Roses  
Height: 11cm, Ø5cm  
Wick: 3x16  
£18.95

A0389  
Baby with Heart  
Height: 11cm  
Wick: 3x10  
£19.50

A0061  
Girl with Flower  
Height: 12.5cm  
Wick: 3x10  
£19.50

A0390  
Engraved Cylinder  
Height: 11cm, Ø6cm  
Wick: 3x16  
£20.99

A0391  
Pine Cone Large  
Height: 12.5cm, Ø6cm  
Wick: 3x16  
£22.50

A0392  
Engraved Christmas Tree  
Height: 19cm  
Wick: 3x13  
£22.70

A0393  
Honeycomb with Bees  
Height: 7cm, Ø4 cm  
Wick: 3x10  
£11.50

A0397	3mm x 20m
A0398	3x13 x 20m
A0399	2mm x 20m
A0400	1.5mm x 20m
A0401	3x10 x 20m
A0402	3x16 x 20m
A0403	3x8 x 20m
A0404	3x6 x 20m

A0405  
Frog  
Height: 4.5cm  
Wick: 3x6  
£9.50

A0406  
Grandpa  
Height: 9cm  
Wick: 3x13  
£17.00

A0407  
Grandma  
Height: 9cm  
Wick: 3x13  
£17.00

A0408  
Cabriolet  
Size: 10x5cm  
Wick: 3x13  
£16.50





Registered Address:  
Abelo Ltd  
13 White Cross Way  
Full Sutton  
York  
YO41 1NY  
Company number:  
09173632

Contact Information:  
(+44) 01759 373801  
(+44) 07508 944101  
[sales@abelo.co.uk](mailto:sales@abelo.co.uk)  
[www.abelo.co.uk](http://www.abelo.co.uk)